

# Monitoring of Cabinet Door & Lock



## Physical Security



Thanks to this solution of the CL series, we separate the security of the cabins with high importance from the authorization of the room and ensure that they are inaccessible without your knowledge and permission.

With our solutions, it can be cabin-based authorization as well as door-based. With the authorization method you prefer (card or password), you can instantly monitor and manage the status of the cabinet doors in all your locations via the Sensaway central management software.

### CL 1004 / 1008 / 1016 Control Modules



- It provides control and management of cabin doors and locks.
- The cabinet keeps key user authorizations and event logs in its memory.
- It communicates with Sensaway over the network connection.

### Cabin Lock Solutions



- It provides authorization and remote management of cabinet doors.
- There are two different options, keypad and Mifare card.
- Depending on the need, solutions are offered so that the front and back doors can be managed separately or together.

### CL 1000 Cabinet Lock Interface



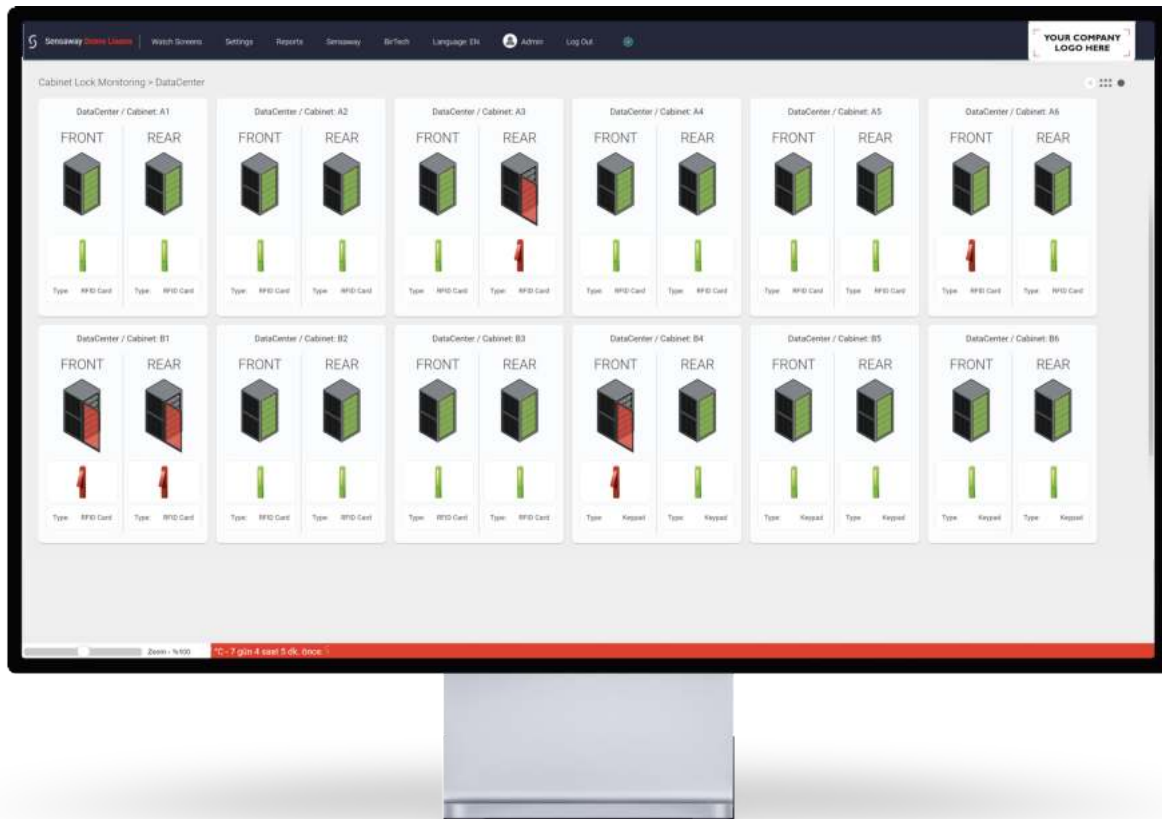
- It provides the connection between the cabinet door locks and the control modules.
- It provides energy to the locks over long distances and in case of insufficient energy.
- One for each cabin is recommended.

# Monitoring of Cabinet Door & Lock



## Physical Security

Sensaway®



## What can be done ?

- You can authorize the cabinets separately located in the data center.
- You can ensure that the access rights of the cabinets in the field can be managed centrally.
- You can see the door open/closed status and lock lever positions of your cabinets instantly.
- By getting historical reports through Sensaway management software; you can access information such as who opened the cabinets, by what method and for how long.
- You can manage user operations (add, move, delete users).
- You can receive notifications for entries or vandalism attempts outside the time you set.
- Optionally, you can open the door remotely

