

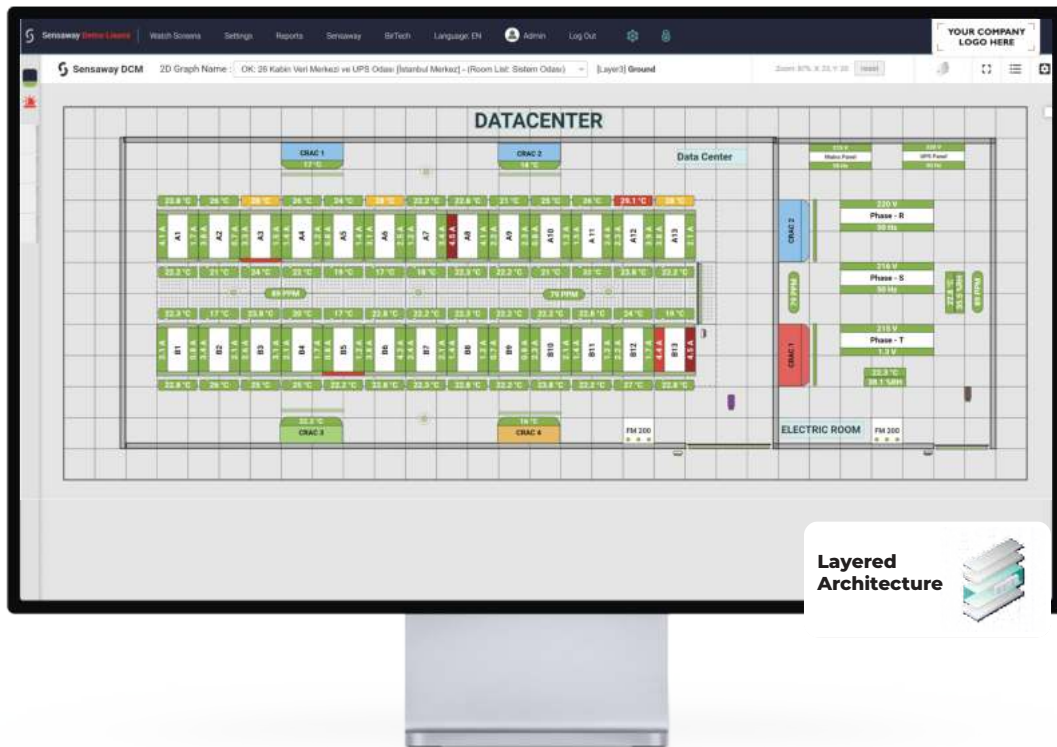
Sensaway Central Monitoring and Management Software

2D Layered Customizable Monitoring and Management Module



Graphic Tools

Sensaway®



Thanks to the Sensaway 2D Layered Customizable Monitoring and Management Module, you can visualize your Datacenter and critical rooms in 2D, and by designing your environments in a scaled way in 4 different layers (Raised underfloor, above ground, lowered under-ceiling, above lowered-ceiling), you can monitor your devices at each layer level and be aware of their status with various colors to be displayed during alarms. By clicking on the relevant device or sensor, you can benefit from both administrative features and rich report options.

What Can I Watch?

Environment Monitoring Sensors (Temperature, Humidity Air Quality, Water Leakage, Door open/closed)

PDU (Drawn power, total current, voltage, frequency..)

UPS (Voltage, Frequency, Current, Battery level..)

Air conditioning (Input/Output Temperature, Humidity, Blowing Rate..)

Generator (Load status, fuel level..)

Camera (Instant motion status)

Cabinet Lock Devices (Cabin lock status, access movements, remote door opening..)

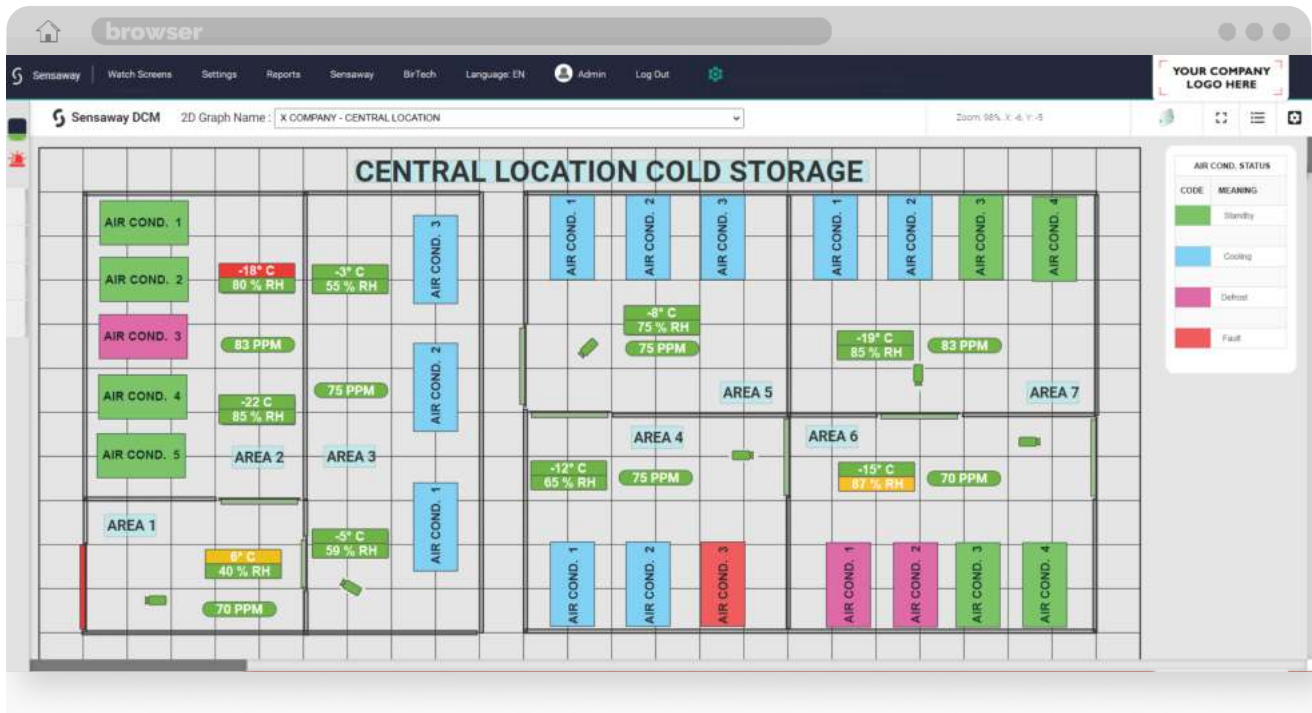
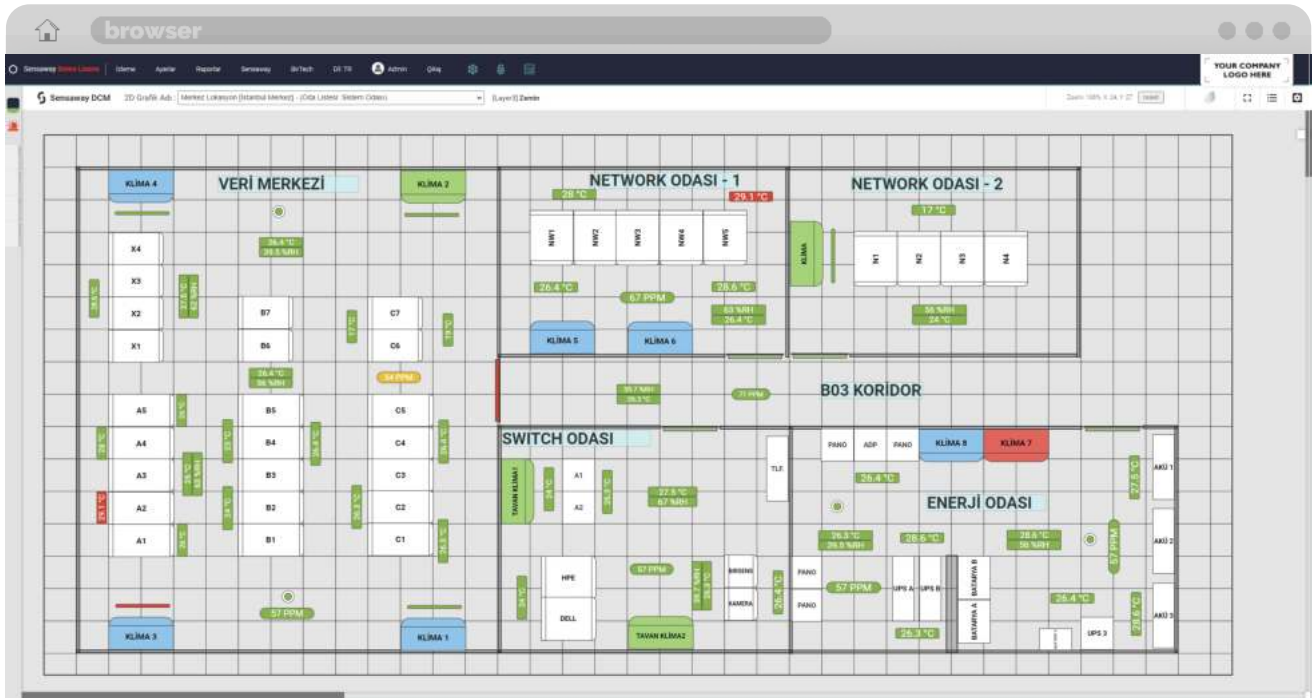
Access Control Devices (Access movements, remote door opening)

Fire Panel (Failure, fire alarm and gas discharge alarms)



Sensaway®

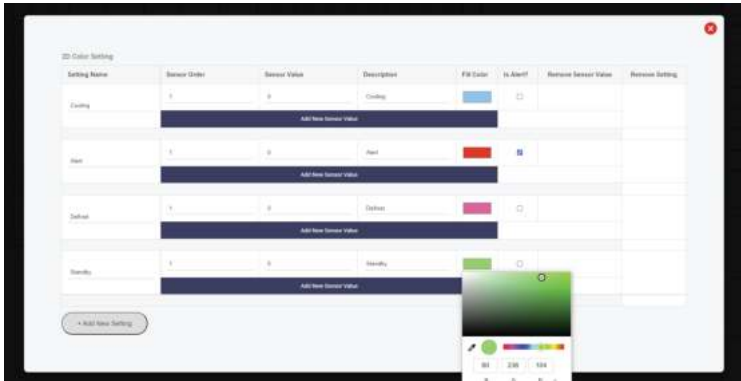
Screenshots





Features

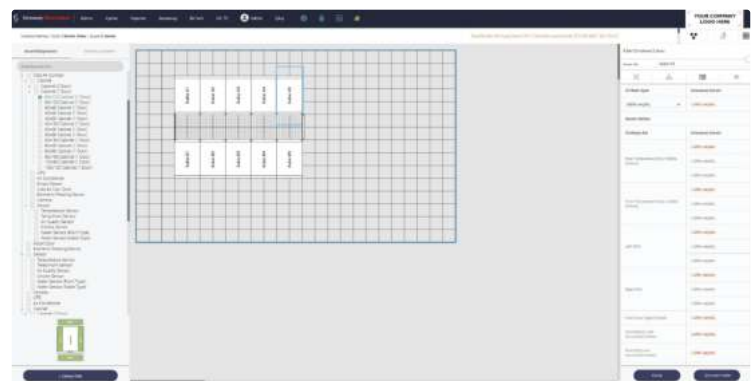
Be Free in Color Choice



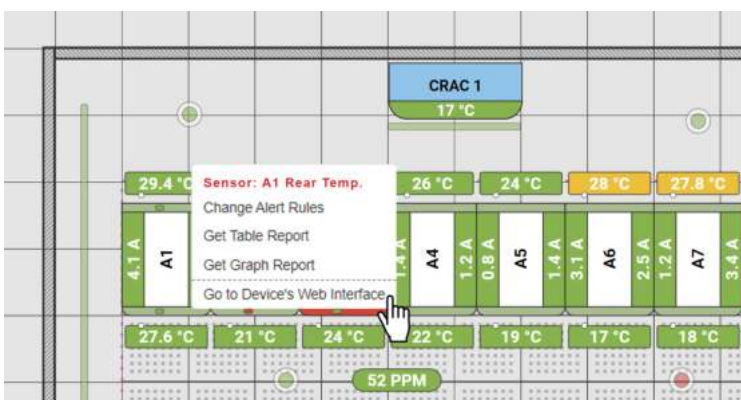
You can color your devices such as UPS, Air Conditioner according to their status. For example, the air conditioner is blue when cooling, green when standby, and red when alarm. You can easily define these color templates that you have created on other devices.

You can easily design the place you will monitor by using the drag and drop method by specifying the actual room dimensions (m²) and the tile dimensions on the raised floor. Thanks to its rich element library, you can get results that are very close to the real thing. You can also choose the font size and thickness you want for each item.

Design Your Own Monitoring Screen



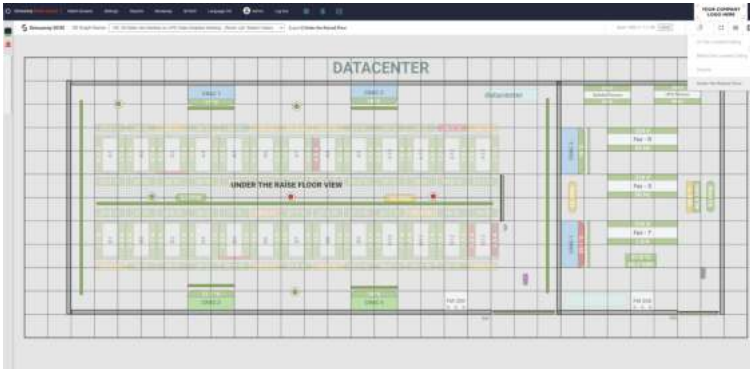
Your Needs Are Just One Click Closer



You can move closer and further away from where you want with the mouse on the monitoring screen. Right-clicking on the sensor or device you want to see the details of; You can easily perform functions such as creating physical reports and accessing the device's web interface.



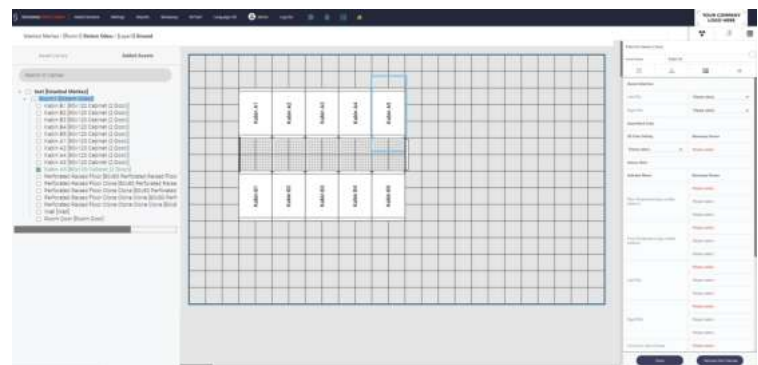
Detailed Analysis with 4-Layer Structure



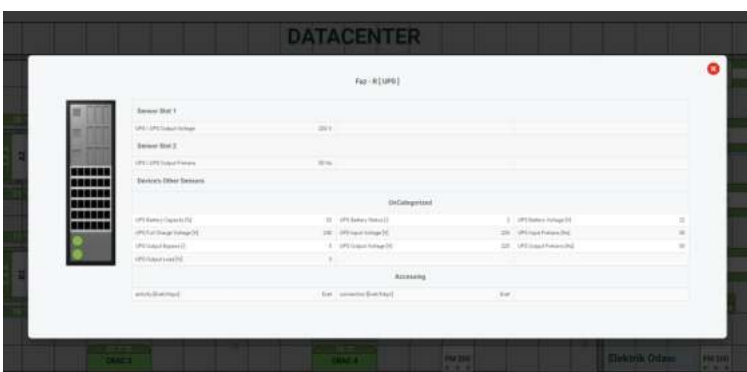
You can place your elements and sensors in four different layers: under the floor, under the floor, under the ceiling, and on the ceiling. For example, if you place point and strip water sensors, smoke detectors, and fire detection sensors under the floor, you can only see these sensors under the floor while monitoring. In this way, you can take much faster action in possible alarm situations.

All Cabin Parameters

- You can view the following details for each cabin separately;
 - Front and Rear temperature/humidity information
 - Front and Back door open/close status
 - Front and Back door lock status
 - Front and Back door entry movements
 - Monitoring of Right and Left PDU energy parameters



Watch Any Device



Every detail that needs to be monitored in the room has been considered, so you can add any device with SNMP V1/V2/V3 or Modbus IP communication, which are international data reading standards, to the system, get various table and graphic reports, and define various alarm notifications for the parameters you want.