

2023



MONITOR MANAGE

ALL ENVIRONMENT DEVICES



Support
Unlimited Location



Support
Unlimited Users



Advanced
Notification and Reports

10th Year

BIR TECH

Index

Birtech® Technology	1
BirSens® Monitoring and Management Systems	2 - 7
Sensaway® Central Monitoring and Management Systems	8 - 9
Monitoring Environmental Parameters	10
Tracing	11
Notification & Authorization	12
Reporting	13
2D Visualization & Environment Monitoring	14 - 17
Energy Costing & PUE	18 - 19
SNMP 3rd Party Device Monitoring	20 - 21
NetDenet Connection Trace of Network Devices	22
Motion Control via IP Camera	23
Biometric Access Control	24 - 25
Cabinet's Door & Locks Monitoring	26 - 27
Sensaway® Mobile Platform	28 - 29
PowerSens® Energy Module	30 - 31
BirSens® Environment Monitoring Equipments	32 - 33
BS 6000 Series Environment Monitoring Modules	34
BS 4500 Series Environment Monitoring Module	35
CL Serie Cabinet Locking Systems	36
F18 Biometric Access Control Module	37
Centralized SMS & Calling Modules	38
AA12 Dry Contact and Relay Management Module	39
Accessories & AC Control	40 - 41
Sensors	42 - 43
SensCare® Extended After Sales Support	44 - 45
Customer Satisfaction Survey, Customer Reviews and Referances	45 - 49

About Us

Birtech® Technology and Our Brands

As Birtech Bilgi Teknolojileri San. Ve Tic. Ltd. Şti. We have 30+ years of experience in the Electronics and ICT industry. We have been working on R&D and product development for 20+ years in the instantly remote monitoring and control of physical, environmental and electrical environmental conditions for all kinds of corporately valuable assets and locations.

We provide wide range ready-made solutions by different

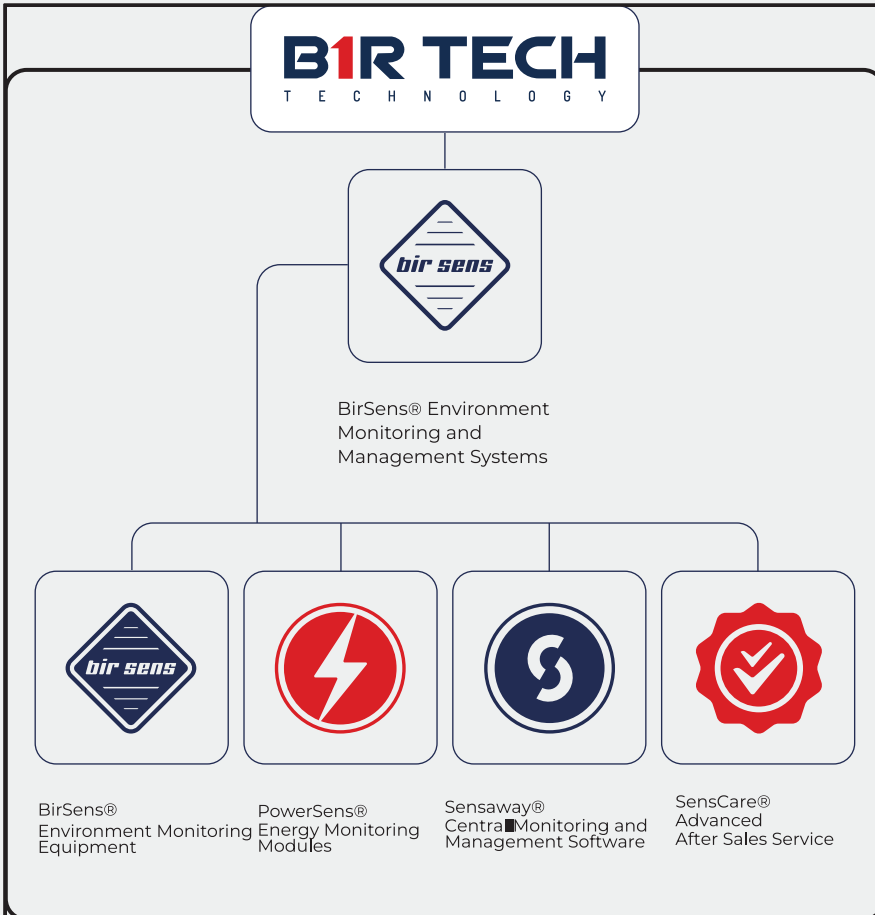
configurations and models under the brands of BirSens® as hardware and Sensaway® as software. We are constantly trying to produce new solutions by using the developing technologies in line with the demands of our customers accordingly we keep continue our R&D activities in this direction.

We provide the most appropriate services and solutions to customers over requirement and cost by starting

from pre-sales needs analysis, commissioning and optimizing. We produce solution at every stage for installation, commissioning, training How to use efficiently and fast & reliable after sales support facilities.

Our primary mission is to meet requirements of our current customers by working with our solution partners in a trust-oriented manner and our vision is to reach new solution partners and customers.

Corporate Structure



Our Address

Istanbul

Evliya Çelebi Mh. Genç Osman Cd.
Ak İş Merkezi
No: 58 / 7 Tuzla / Istanbul / Turkey
Tel: +90 216 395 79 79

Ankara

M. Kemal Mh. Tepe Prime İş Merkezi
C Blok No: 39 Çankaya / Ankara / Turkey
Tel: +90 312 920 08 28

Eskişehir

Hoşnudiye Mh. Çiftkurt Sk. HKS Plaza
Odunpazarı / Eskişehir / Turkey
No: 1/18
Tel: +90 216 395 79 79

Izmir

Atıf Bey Mh. 67. Sk. Kılıçlar Plaza
No: 45 Kat: 2 Gaziemir / Izmir / Turkey
Tel: +90 232 218 21 60

Konya

Alavardı Mh. Keçili sk.
Meram / Konya / Turkey
Tel: +90 535 961 67 37



BirSens[®]

Environment Monitoring Systems



Our Solutions



1 - **Monitoring Environment Parameters:**

It is detected and monitored a lot of environmental varieties such as Temperature, Humidity, Air Quality, Water Leakage, Motion Control, Air Flowing, Power Supply Voltage, Frequency, Grounding Voltage, are instantly monitored.



2 - **Monitoring 3rd Party Devices :**

Regardless of the brand, Air Conditioner, UPS, Smart PDU, Gen Set, Energy Analyzer are monitored by their own sensor



3 - **Ensuring Physical Security :**

IP CCTV, NVR, Biometric Access Control Devices, Electronic Cabinet Locking Systems are monitored in real time.



4 - **Central Management Authorization and Monitoring:**

Sensaway Central Management Software 2D Layered Screen Design provides ability to demonstrate by over real dimensions, Monitors facilities from all modules and sensors and also provides various notifications in critical situations. .



5- **Monitoring Power System Single Line Diagram:**

PowerSens Energy Monitoring Solution provides Monitoring facility for Power System Connection from MV Transformer to the System Room involving all MDB & DB and its MCCB.

Monitoring and Management Systems



Why Birsens®?

We progress by closely following the developing technology with 20+ years experiences. We produce customer oriented and tailored solutions which brought %95 customer satisfaction. We continue to develop on our path as having a vision and mission in our field.

What is Environment Monitoring?

The system contains that enable instant monitoring and managing of environmental conditions which gathered from installed locations that have substances of high concern.

Where is it used?

It is used to monitor and manage all kinds of environment that need to be monitored or contains risks in accordance with ISO standards.

Why is it necessary?

Physical devices, servers, auxiliaries, created data and all information stored in physical devices are definitely required to be protected and keeping reliance and sustainability over harmful subjects.

These kinds of systems notify you after diagnosis of environment conditions, emergencies, natural disasters, some other outer affects, detect 3rd party devices on network if there is and intervenes for desired scenario.

What do we provide?



Support to Unlimited Location



Support to Unlimited Users



Hierarchical Authorisation and Monitoring Management



Monitoring All Data via Single Software (Web, Android, IOS)



Expandable Database Capacity



Advanced Reporting and Notification



Advanced After Sales Support Services

We Care About Quality

Product and System Certificates



Field of Application



System Rooms
& Data Center



Technical
Service Rooms



Archive Rooms



Cold Chain &
Medical Cabinet



Laboratories



Food & Foodstuff
Warehouses



Hen Houses /
Green Houses



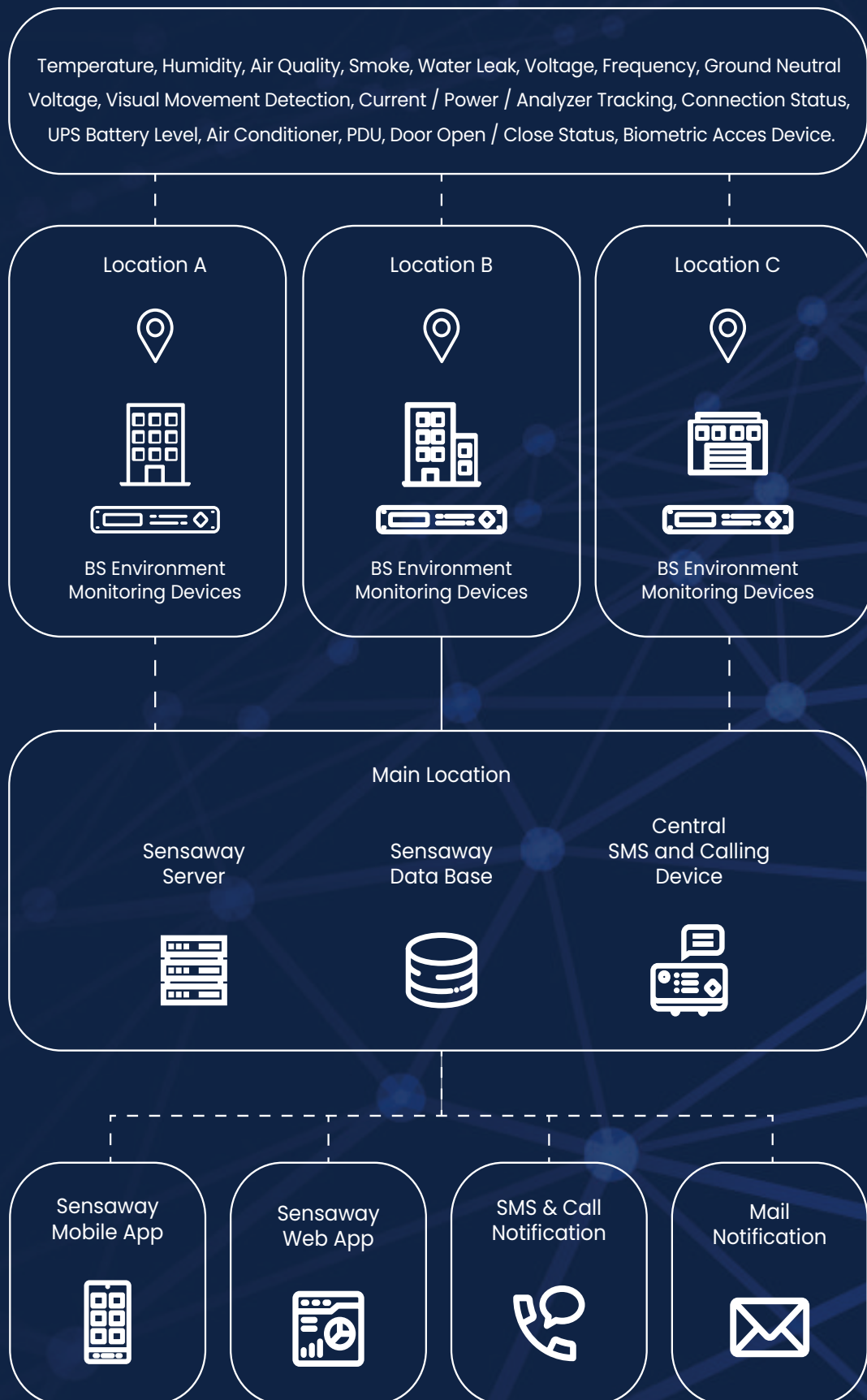
ATM



Base Station

Our systems are able to create solutions for a single room or a zone where created in a small or big size of institution hence they are designed & configured appropriate for scalable and expandable structure.

System Architecture





Sensaway®

Central Monitoring & Management Systems





Sensaway®

Monitor and Manage



What is Sensaway?

Sensaway® Monitoring and Management Software is a web based Centralized Environmental Management Software which allows you to monitor and manage of data that are gathered from environments where that equipment is installed, also involved to monitor of Power Supply parameters and ensure physical security as well. Sensaway® also manually or automatically creates Advanced Reports and Notifications for indifferent level of

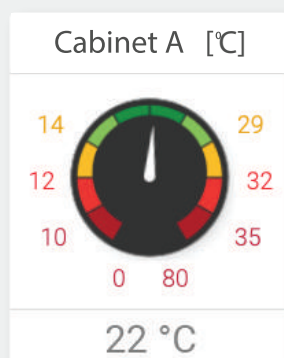
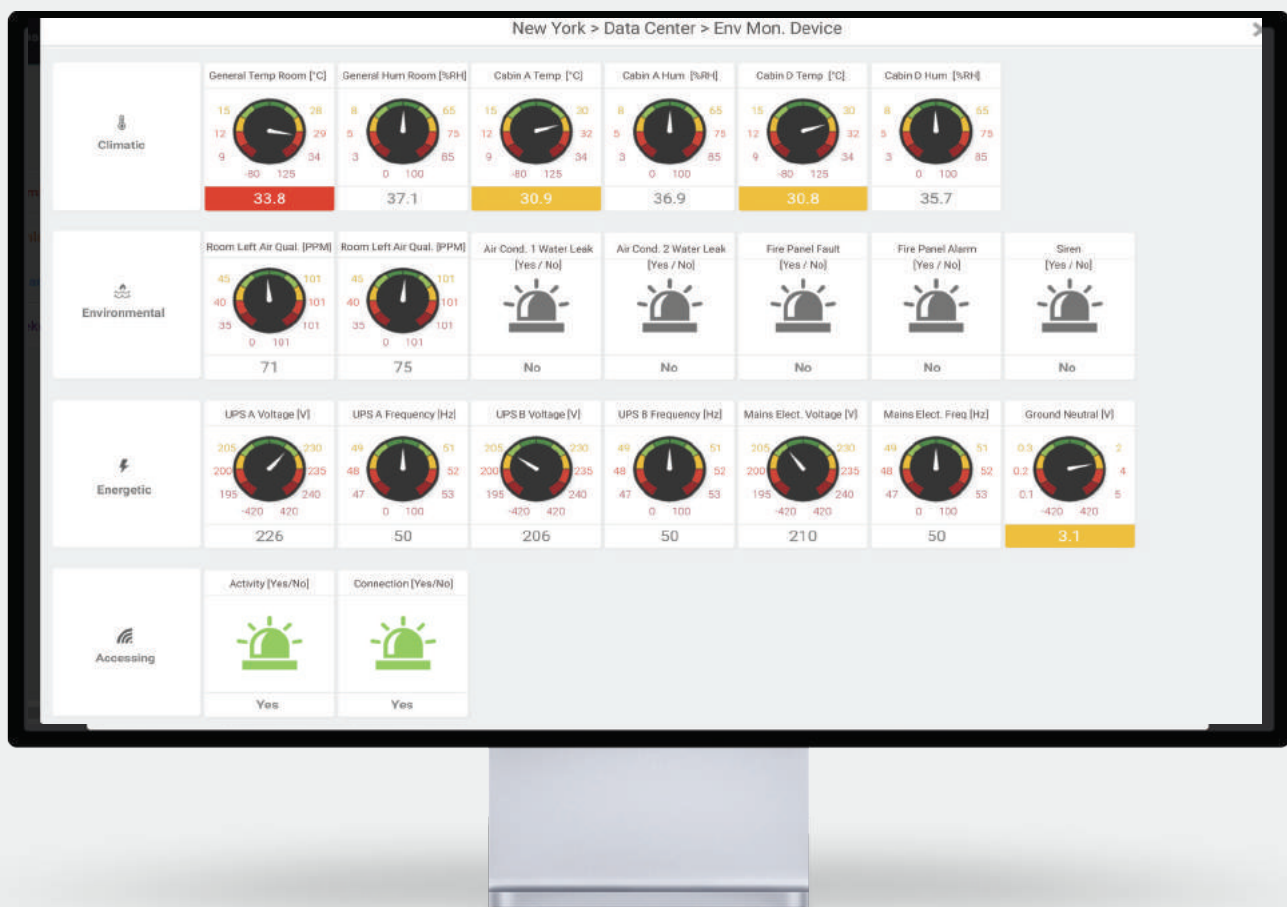
authorized users by gathered data from connected sensors.

It is constructed and developed based on Net Technology and MS SQL databases that are enable to work on Windows base system software.

It is continuously being developed to match new technological improvements and customer requirements.

Monitoring Environmental Parameters

Environmental, Climatic and Energy Parameters



Monitor climatic, environmental, connectivity and energy parameters of valuable areas, immediately respond to emergencies.

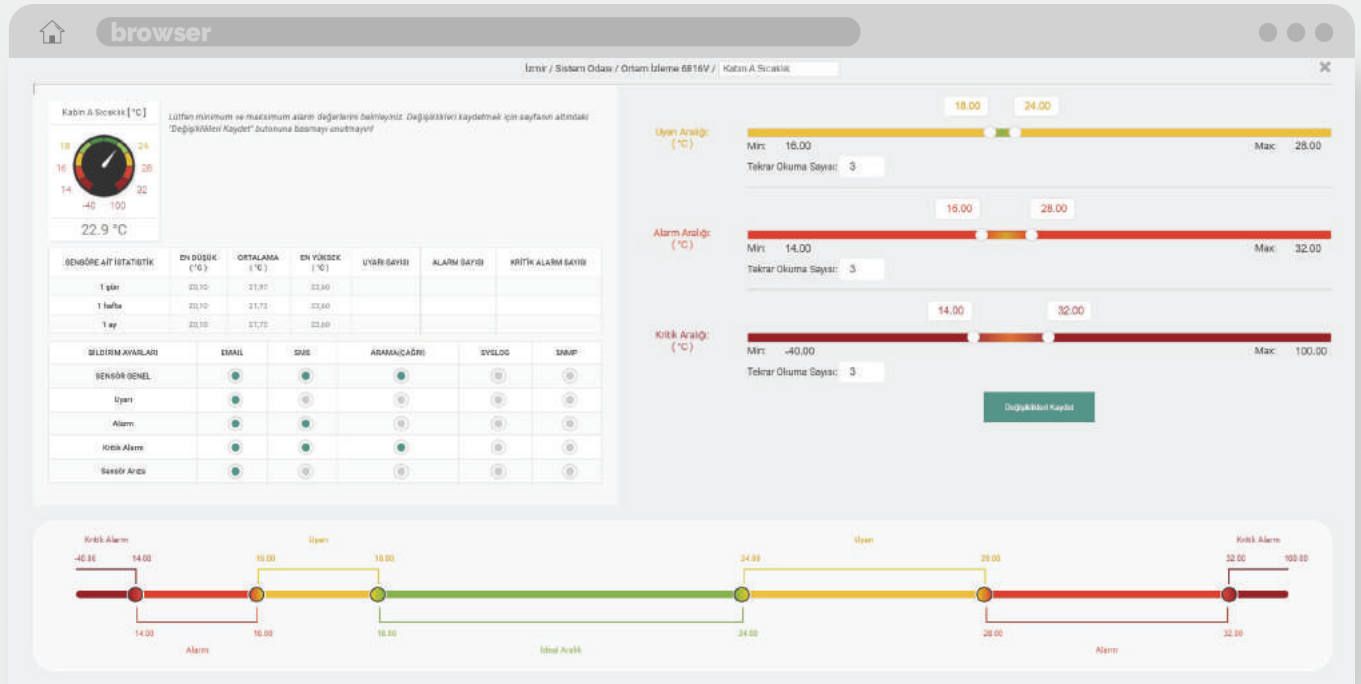
Monitoring

Analysing Tools



- Central monitoring all modules, cameras and NetDevice in different locations,
- Monitoring devices with different coloured icons for different alarm situations,
- Monitoring screen with 6 different options,
- Monitoring all measurement data on a single screen,
- 1/2/8/12/24 hour fast graphic supported analysis of all sensor values,
- Instant monitoring all data,
- All devices in a single monitor,
- Tracking of all locations on the map with their real co-ordinates,
- Collectively monitoring the data of all sensors on the digital screen,
- Monitoring sensor data by meter structure,
- Monitoring environmental parameters under climatic, environmental, electrical and access groups,
- Accessing and/or recording the images captured by the camera image,
- Viewing the captured motion pictures as thumbnails with date and time information,
- Identifying sites and areas of locations with their pictures,
- Hierarchical monitoring of Company / Site / Area / Module structure.

Notification & Authorisation Management Tools



Notification

- Ability to create different notification options according to alarm levels
- Ability to define different threshold values for different levels
- Ready-made alarm rules defined in ISO 27001 standard
- Transmission of notifications to the authorities via e-mail, SMS, telephone
- Connection alarm notification for inaccessible module, camera, Net-Denet Clients
- Alarm notification for faulty or inaccessible sensors
- Authorization of users as primary /secondary notification group.
- Receiving notifications by SMS /call with options during and outside working hours, on weekdays and weekends - at any time
- Ability to create audible and visual warning with siren at critical alarm level
- Notification sending frequency setting
- Quick access to all events in the notification panel on the watch pages
- Subtitle notification option Receiving notifications in different sounds from the monitoring screens according to the alarm level.
- Sending the last detected motion pictures to authorized users via e-mail

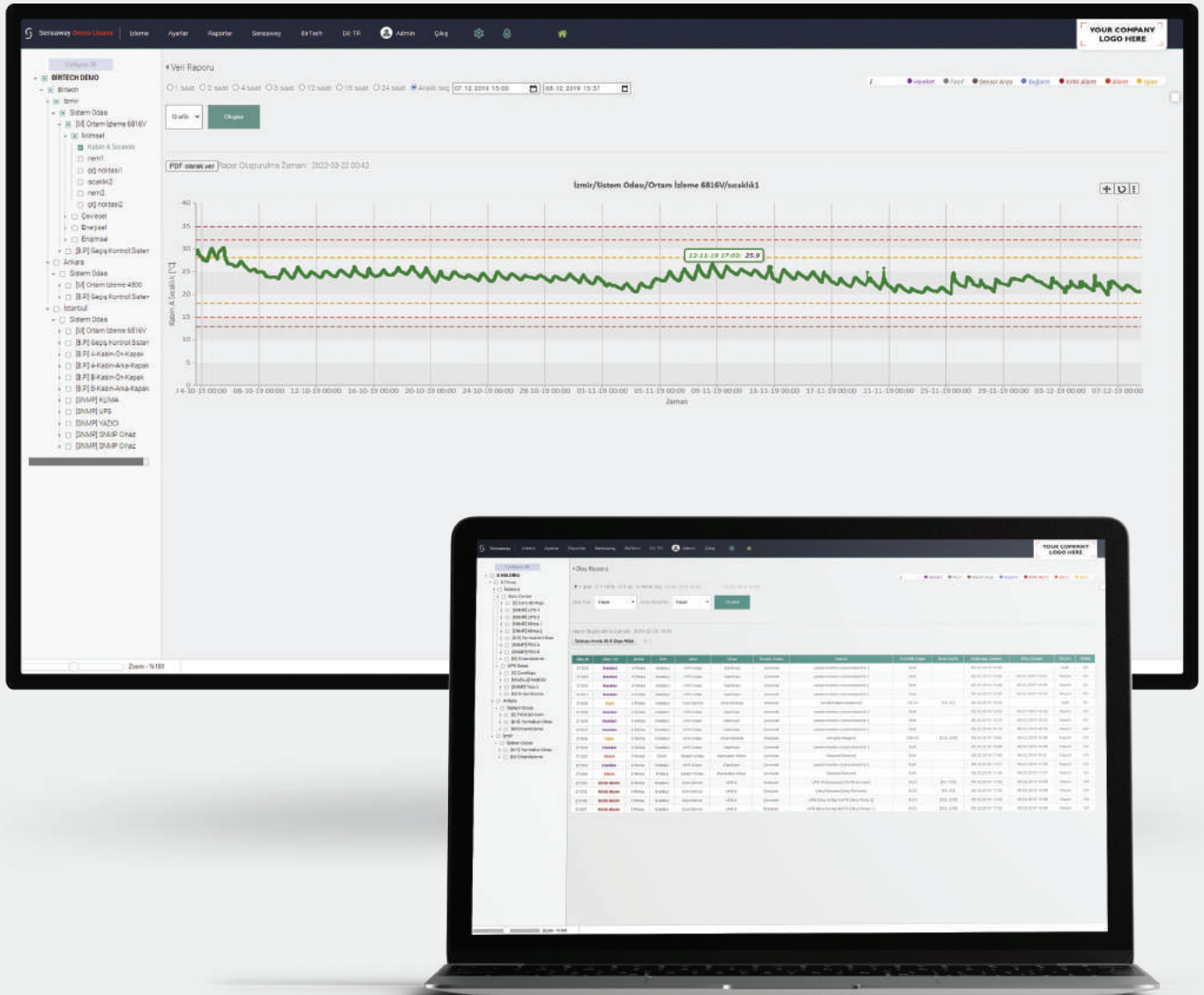


Authorisation

- Ability to divide all users into pro-file groups,
- Ability to grant various authorizations to profile groups such as monitoring, management, and reporting,
- Ability to monitor and authorize site, area, device-based for each user,
- Ability to manage user-based notification options.
- User-based submission of daily, weekly, monthly reports

Reporting

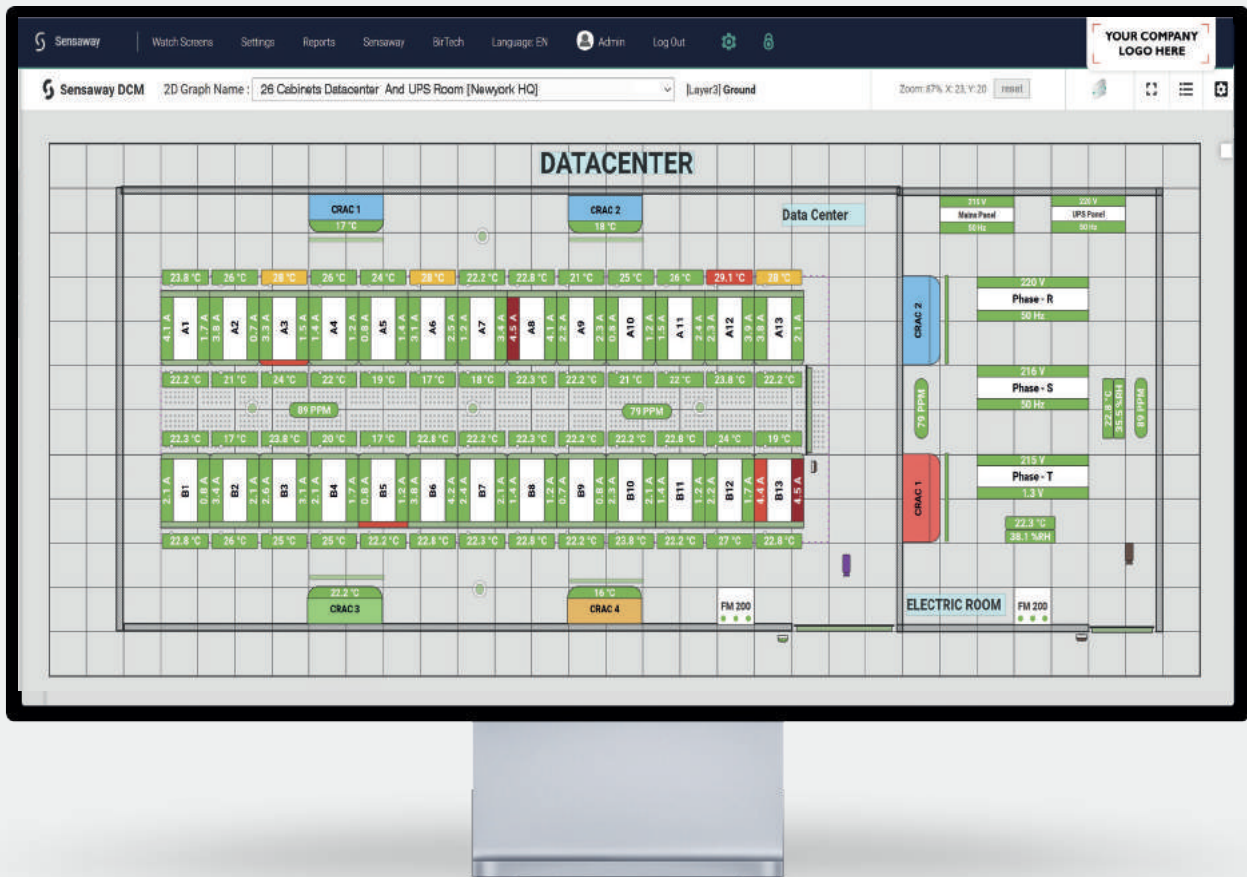
Anlysing Tools



- Ability to create PDF, XLS or graphic reports between desired date & times
- Ability to send automatic reports for desired users on a daily - weekly - monthly basis,
- Daily or weekly SMS and e-mail sending in order to notify that the system is working properly,
- Reporting of system logs,
- Reporting the transmission logs of notifications to users.

2D Layered Visualization Design and Monitoring

Graphic Tools



What can I monitor ?

Environment Monitoring Sensors (Temperature, Humidity, Air Quality, Door Open/ Close Water)

Leakage, PDU (Drawn Power, Total Current, Power Voltage, Frequency..)

UPS (Supply Voltage, Frequency Current, Battery Level,..)

Air Conditioning (In / Out Temperature, Humidity, Air Flowing Rate..)

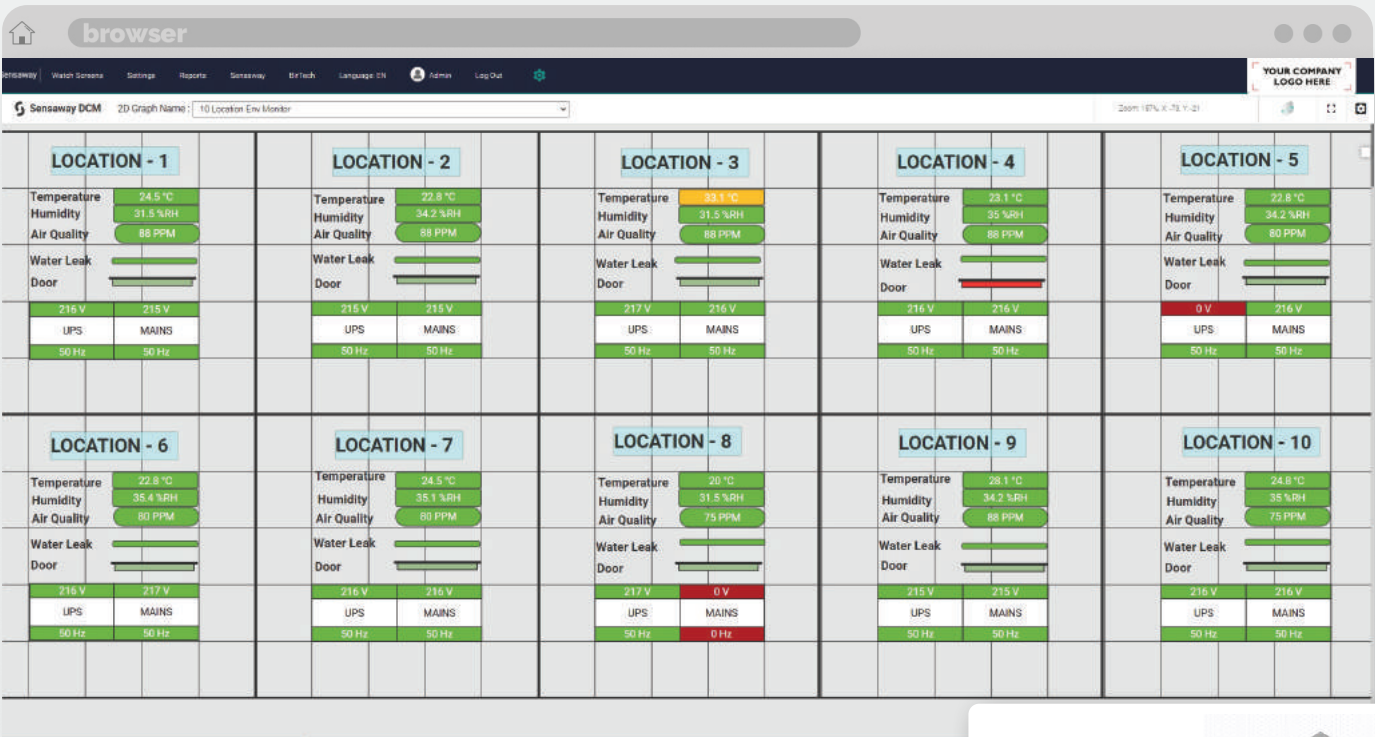
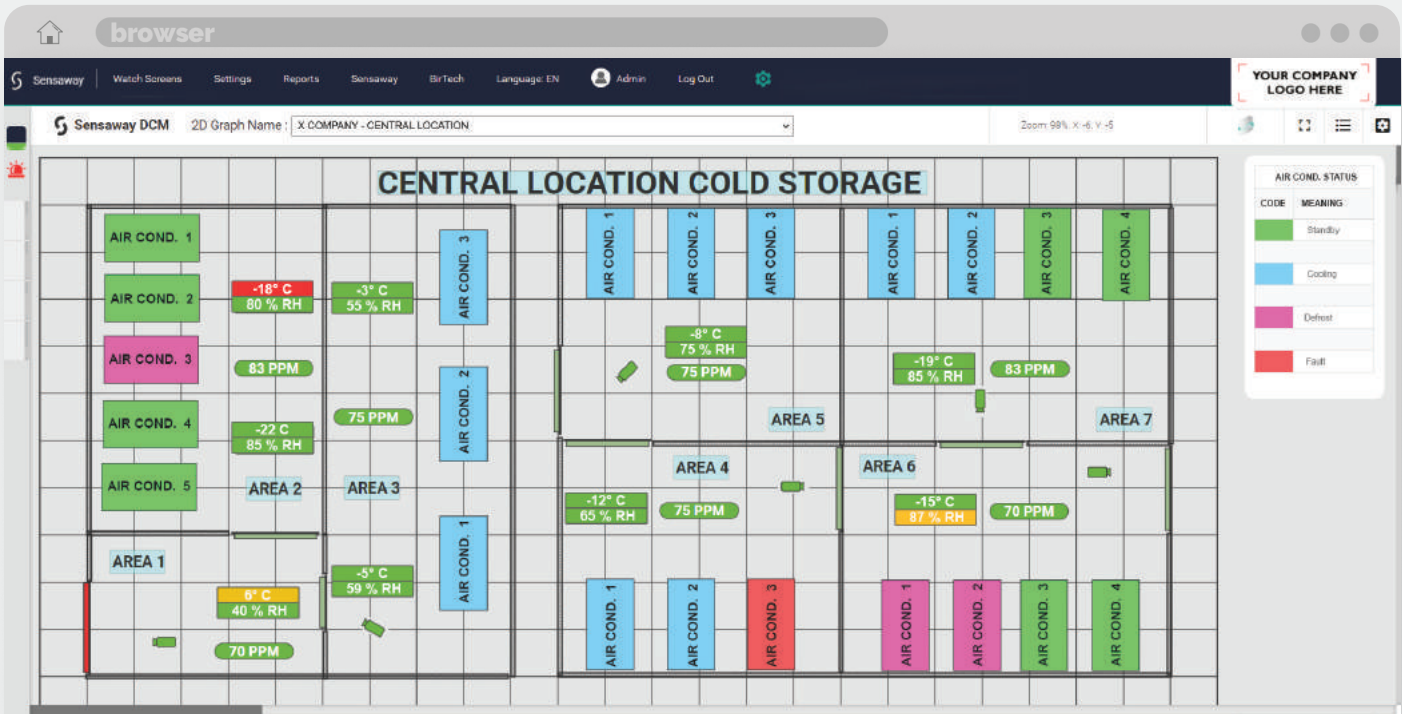
Generator (YT. Load status, Fuel Level..)

CCTV (Grab motion instantly)

Cabinet Locking Devices (Cabin lock status, access movements, remotely door opening..)

Access Control Devices (Access traffics, remotely opening door,)

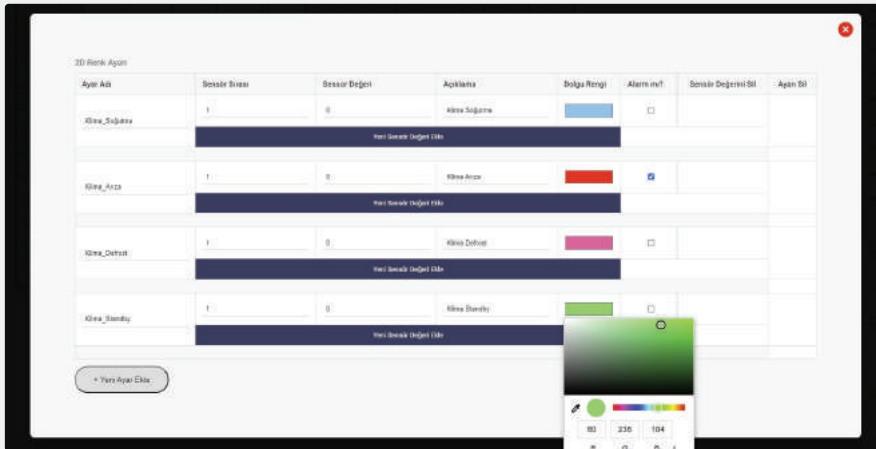
Fire Prevention Systems (Alarm scenarios at Malfunction, alarm and gas evacuation)



Layered
Architecture

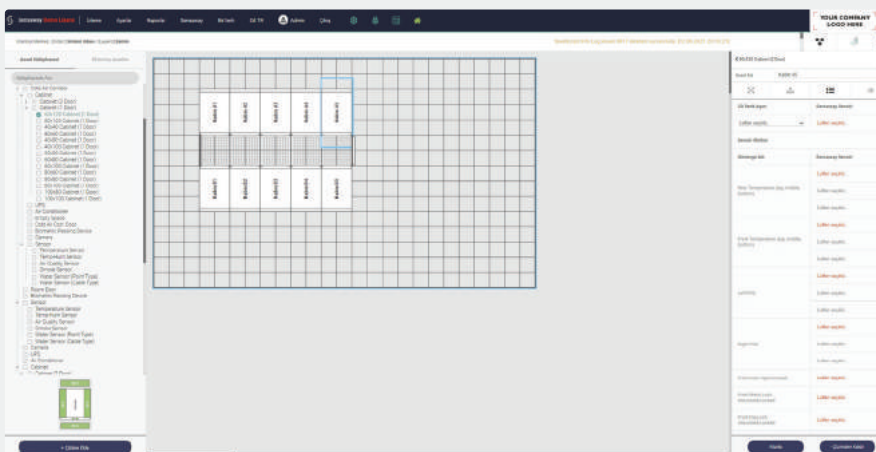


Free to Select Colours



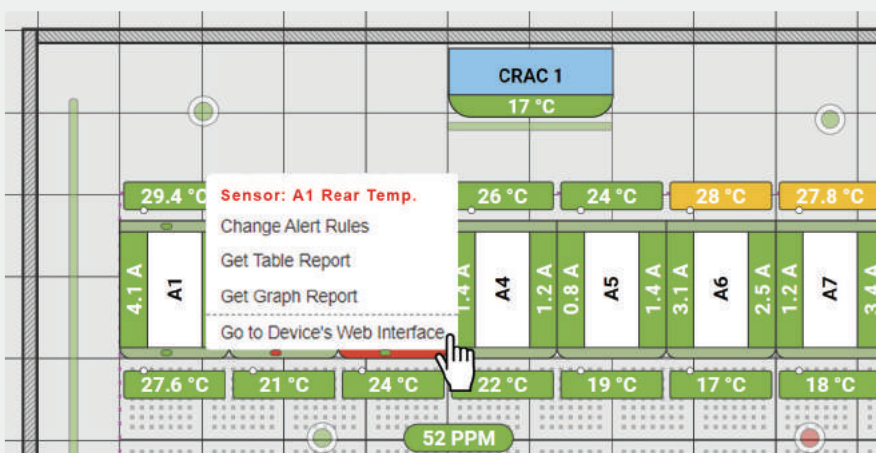
Sensaway® enables you to infinitely free for colour selection to visualize your device status UPS, AC e.g. Furthermore, you can independently determine of both name and colours. The Blue may refer AC on works while Green refers stand-by it, hence Red colours takes attention for alarming positions or different combinations whichever you wish. You can easily designate to other devices as well.

Design your monitoring screen



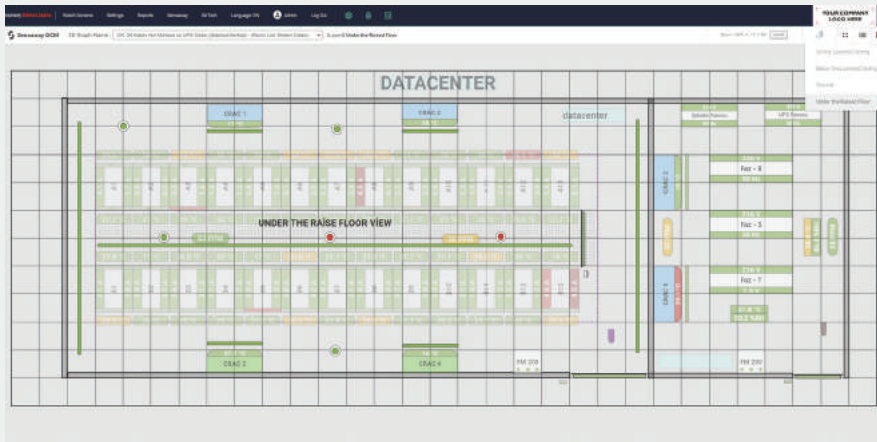
Drag & drop feature makes easy to design 2D layered plan of desired location. It is just request to input data of room's dimensions where it is desired to manage and tile from raised-up floor. Thanks to rich asset library enables to create pretty real outputs. Furthermore you are free to choose font size and types for every single asset

Your needs are just a click away



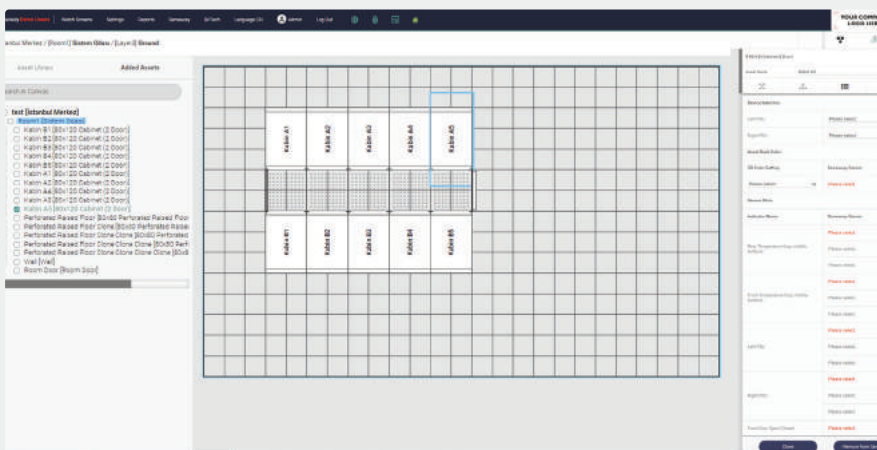
A mouse provides you all control and accessibility. You can easily reach zoom-in, zoom-out, set alarm rules & scenarios, table / graphic forms reports, reach details of each devices and web interface of devices.

Overall Analysis by 4 Layers Structure



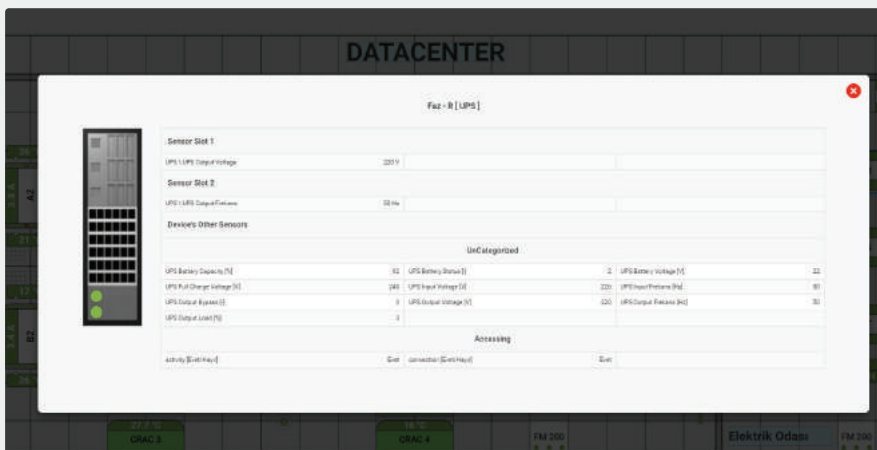
It is classified 4 independent layers, Under floor, Ground, Under ceiling and Ceiling where environment monitoring equipment and assets are enable to be installed. Example: You can easily classify your zone like if you install Cable type and point type water leakage sensors, smoke detectors, fire detection sensors at under raised floor, thus, you can monitor them as classified and faster reaction in case of possible alarming

All Cabinet Parameters



- The following parameters are individually monitored for each cabinet;
 - Temperature / Humidity data at Front and Rear
 - Door Open / Closed position at Front and Rear
 - Door locking position at Front and Rear
 - Accessing from Front and rear Doors
 - Monitoring Energy parameters of PDUs at Right + Left.

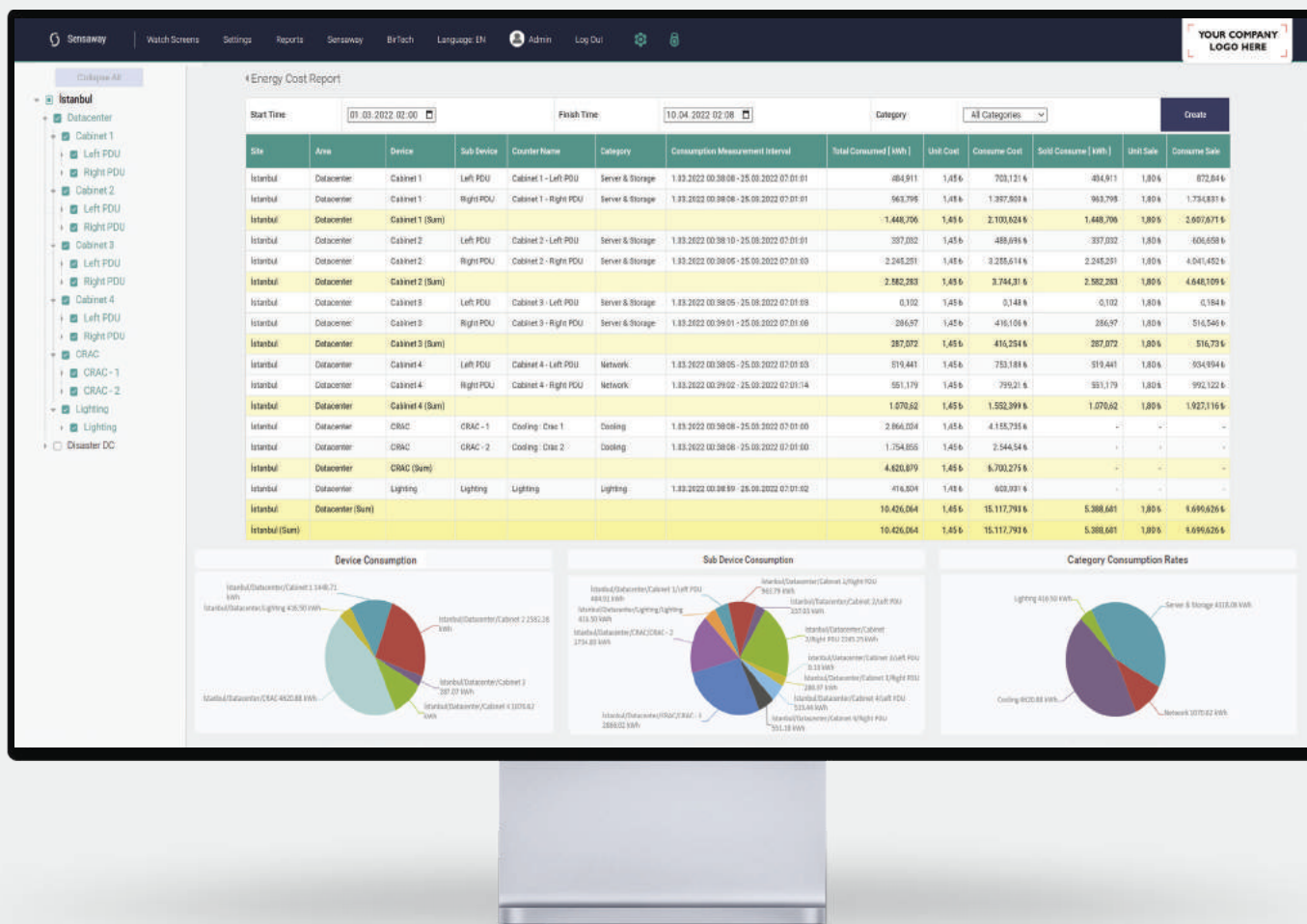
Monitor ever device you wish



Sensaway® considers all probability for monitoring in a centre. It easily adda any devices which have SNMP V1/V2/V3 or ModBus International IP communication protocols then use those read data to create kind of de-fined reports and notify.

Energy Consumption Tracking and Costing.

Productivity Tools



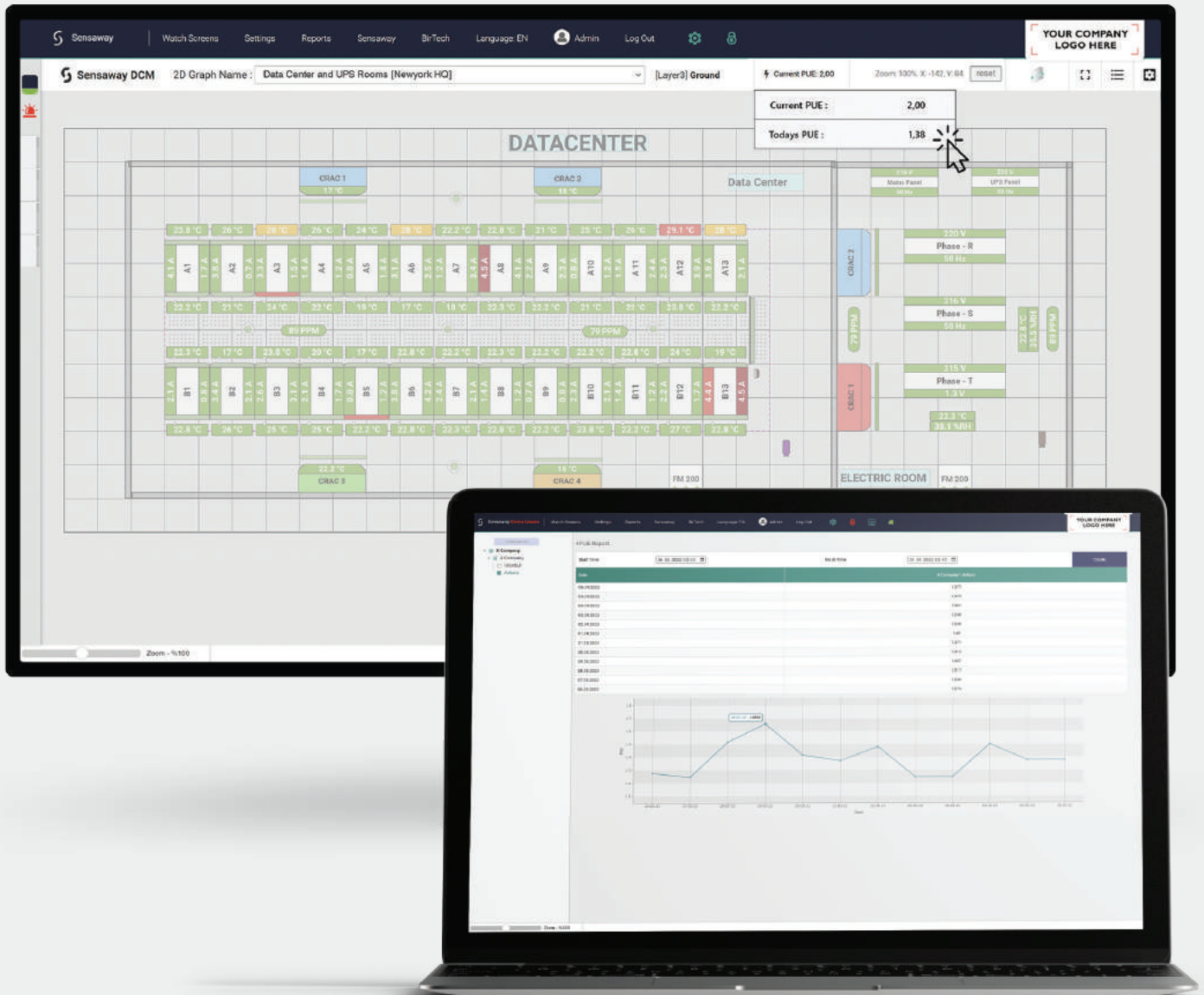
A sustainable system reduces the facility's impact on climate change, reduces operating cost, maximizes the importance of existing capacity, complies with regulation to reduce carbon emission and initiatives and is more attractive to customers. Thanks to Sensaway® enables us to trace energy consumption of each location, site and devices by a centralized platform. You can realize cost effectiveness goals after integrated infra-structural devices to Sensaway® such as Energy analysers, Power

Supply Measurement Devices and Pdu. You can create several consumption categories such air conditioning, lightening then receive smart & customized reports to analyse consumptions.

You can monitor energy cost defining units and cost per units to system then analyse them over consumption (kwh) and total cost in several currency. It extra ordinarily helps you to review and manage your cost and sales revenue if you provide hosting or co-location services.

Data Center Power Usage Effectiveness (PUE)

Power Usage Effectiveness



Power Usage Effectiveness (PUE) is one of the most popular KPIs for system facility. It is the ratio of total facility energy to total IT equipment energy. The closer to 1.0 your PUE is, the more efficient your entire facility is. If you have a newer establishment with state-of-the-art technology, your PUE target should be around 1.2 but no more than 1.4.

Calculating PUE can be a tedious process full of manual meter readings and math, but with Sensaway® software, you can automatically calculate, trend, and compare the PUE for all your sites in real-time and within particular time period as well. Then, you can focus on strategic projects that will reduce your energy consumption rather than time-consuming and potentially inaccurate PUE math.

SNMP

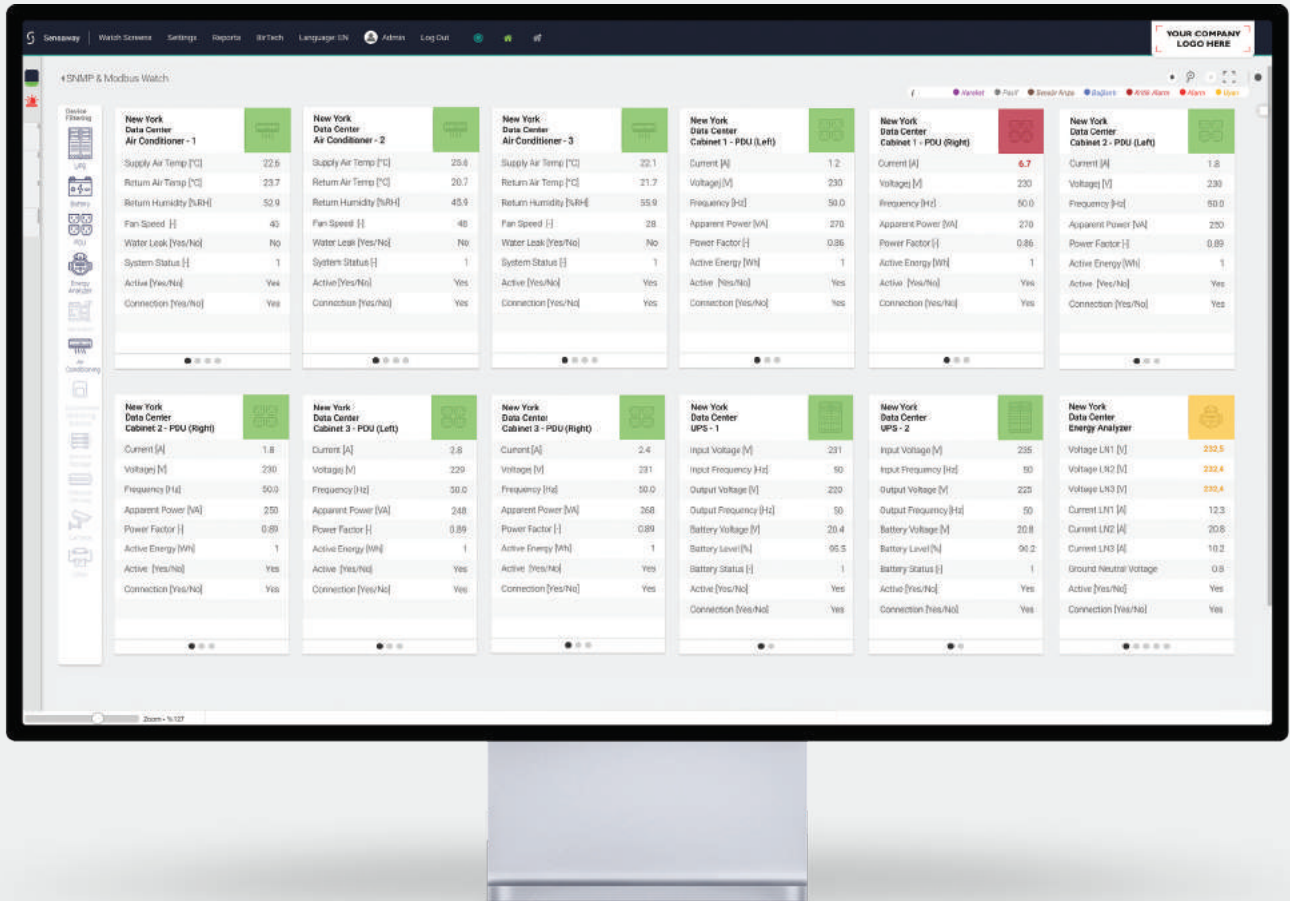
3rd Party Device Monitoring

Thanks to Sensaway® SNMP support, you can manage your data centers. You can filter SNMP and Modbus devices on the basis of both location and device category and monitor them with the sensor data you want. You can define separate alarm rule for each sensor.



SNMP

3rd Party Device Monitoring



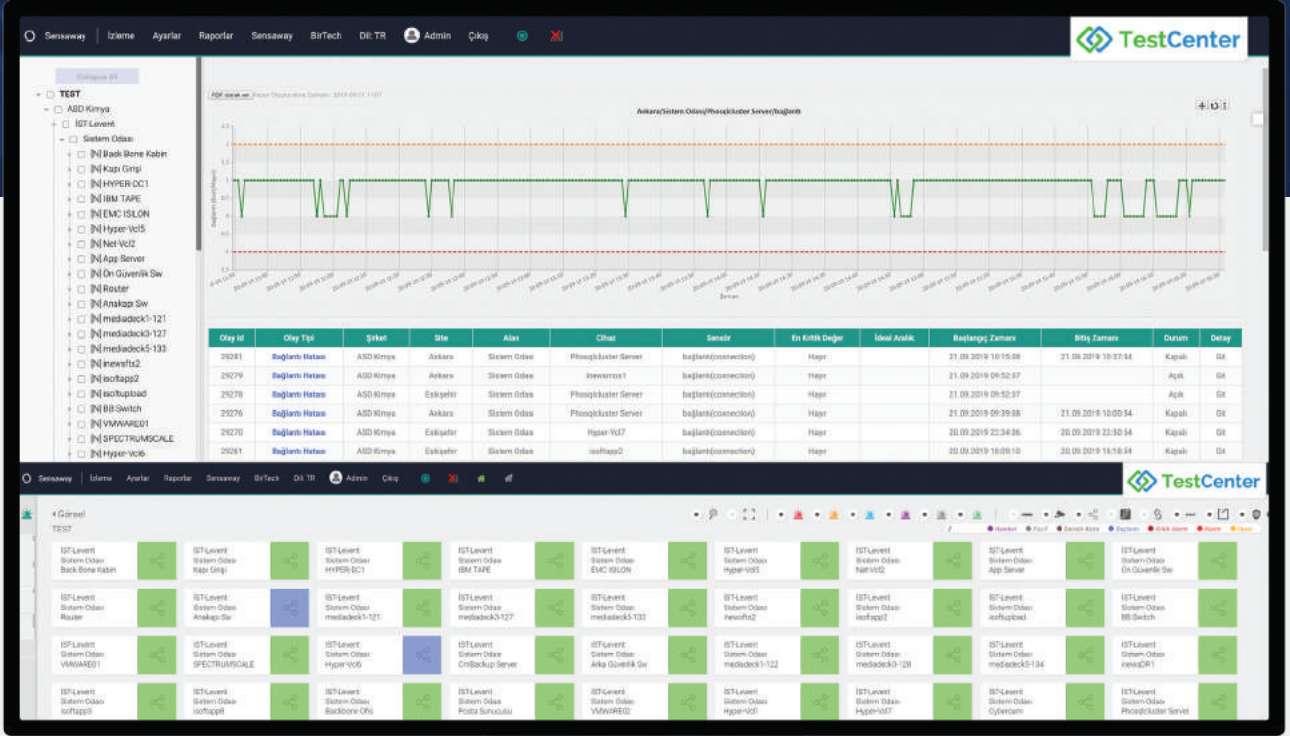
With SNMP License Packages, you can monitor and manage the devices in your environments with Sensaway® Featured on a device and sensor basis.

- **IP PDU**
- **UPS**
- **AC**
- **CRAC / CRAH**
- **Energy Analyzer**
- **ATS / STS**
- **Generator**
- **Various IT Devices**

SNMP supports V1 / V2 / V3.

NETDENET™

Detect Connection Network Devices



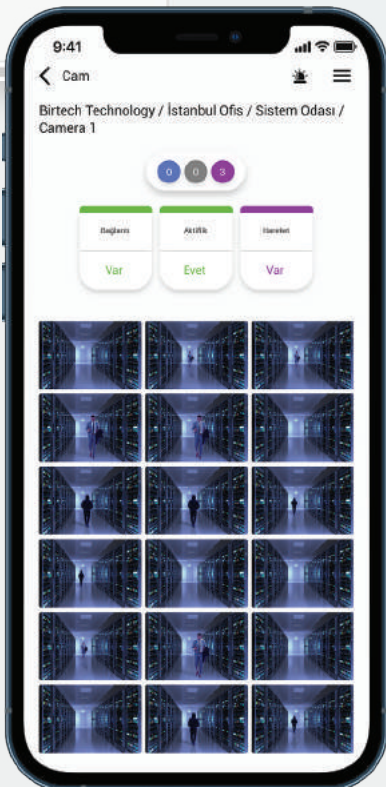
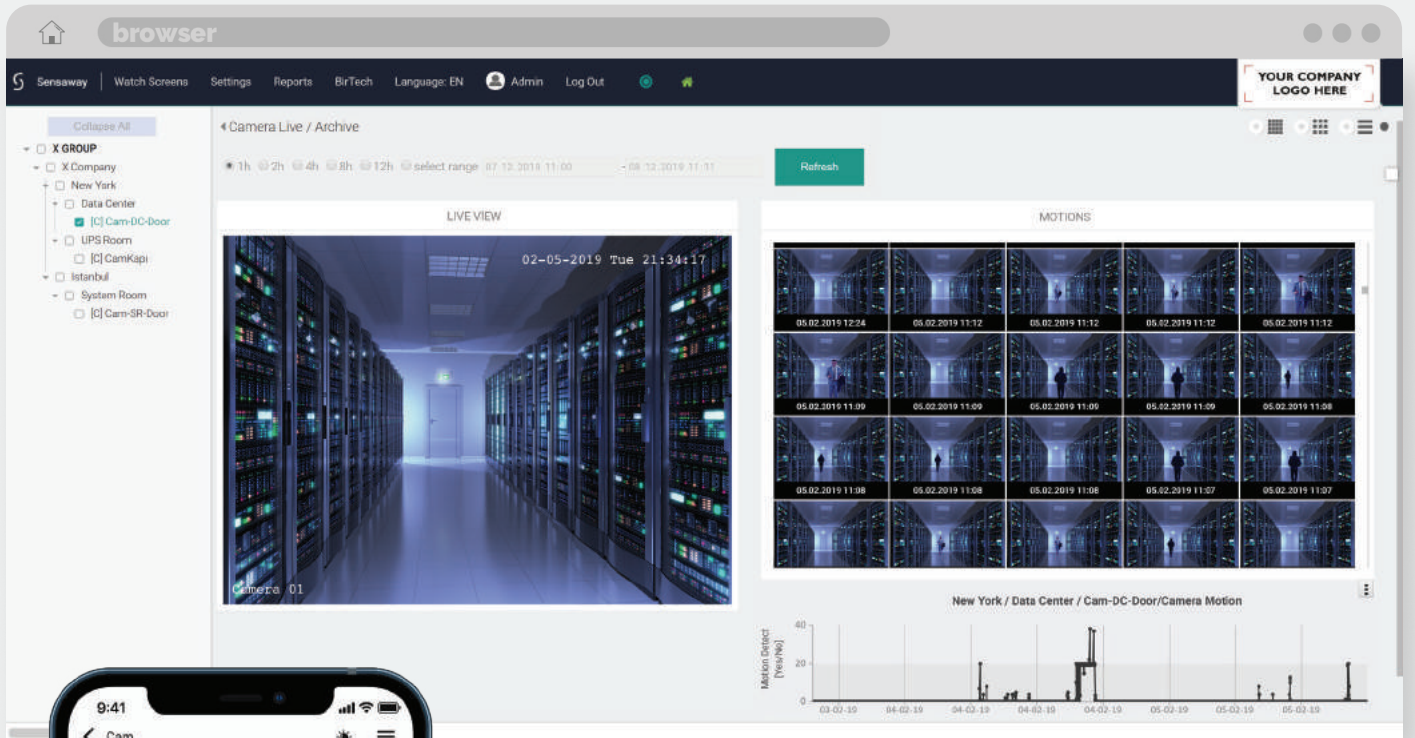
Thanks to the NETDENET solution, you can monitor the connections of IP-access devices such as servers, access points, switches, routers, IP cameras, and IP switchboards in your network with Sensaway® features. You can be informed about the interruptions that may occur before anyone else.

 Disconnected

 Connected

Motion Control via IP Camera

Physical Security



Instead of recording continuously, it detects movements and saves them as pictures, takes pictures at desired intervals and stores them on the software server.

When you enter the room, the official e-mail of the person entering the room is sent to the authorized persons. Via software; You can see who enters the room and who leaves with their pictures at the time intervals you specify.

Biometric Access Control

Physical Security



100% Integrated into Sensaway® Software !

- It sends instant notifications of logged in people.
- Reports entry / exit status for selected date range
- Monitors the door open/closed status
- Sends alarm notifications when device is disassembled against sabotage threat.
- User management, migration and deletion via software

Access Record

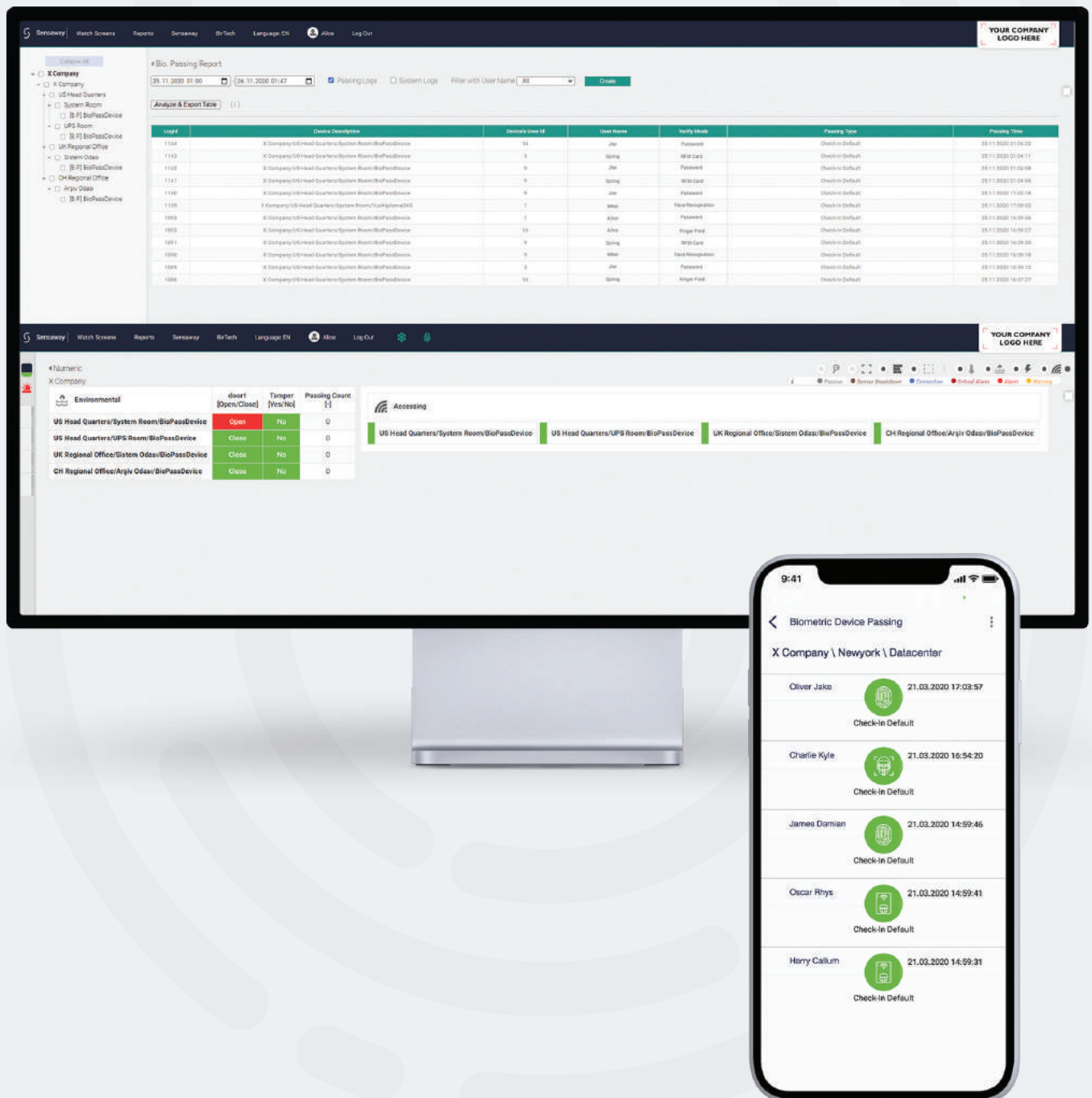
Device	Log Person	Verification	Log	Log Time
Company X / Data Centre / Finger Print AC	Kenal Yıldız	Finger Print	Entry	17.01.2019 17:04:17
Company X / Data Centre / Finger Print AC	Aslı TURGUT	Finger Print	Entry	17.01.2019 17:04:00
Company X / Data Centre / Finger Print AC	Berk KARAPINAR	RFID	Entry	17.01.2019 17:03:11

B1R TECH
TEKNOLOJİ
Akıllı Güvenlik

Ex: Biometric Access Notification E-Mail.

Biometric Access Control

Sensaway® Screen Display

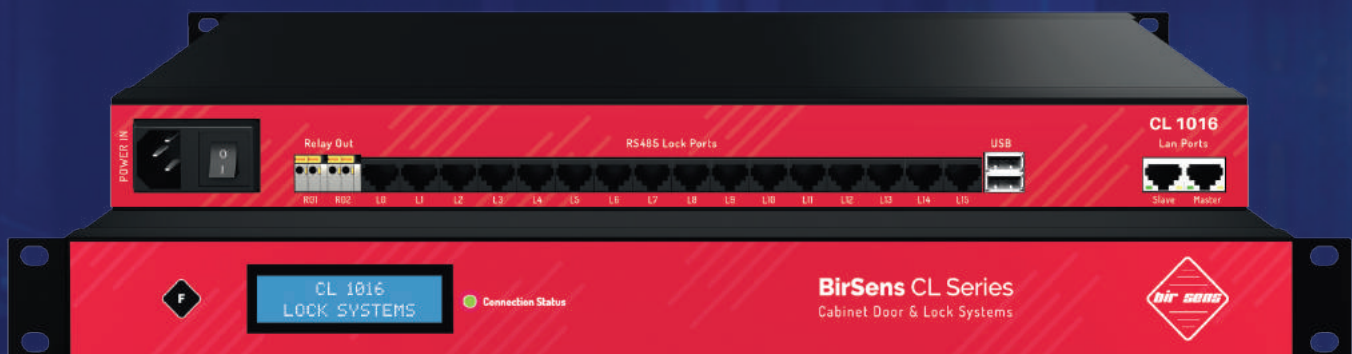


Cabinet Door and Lock Monitoring

Physical Security



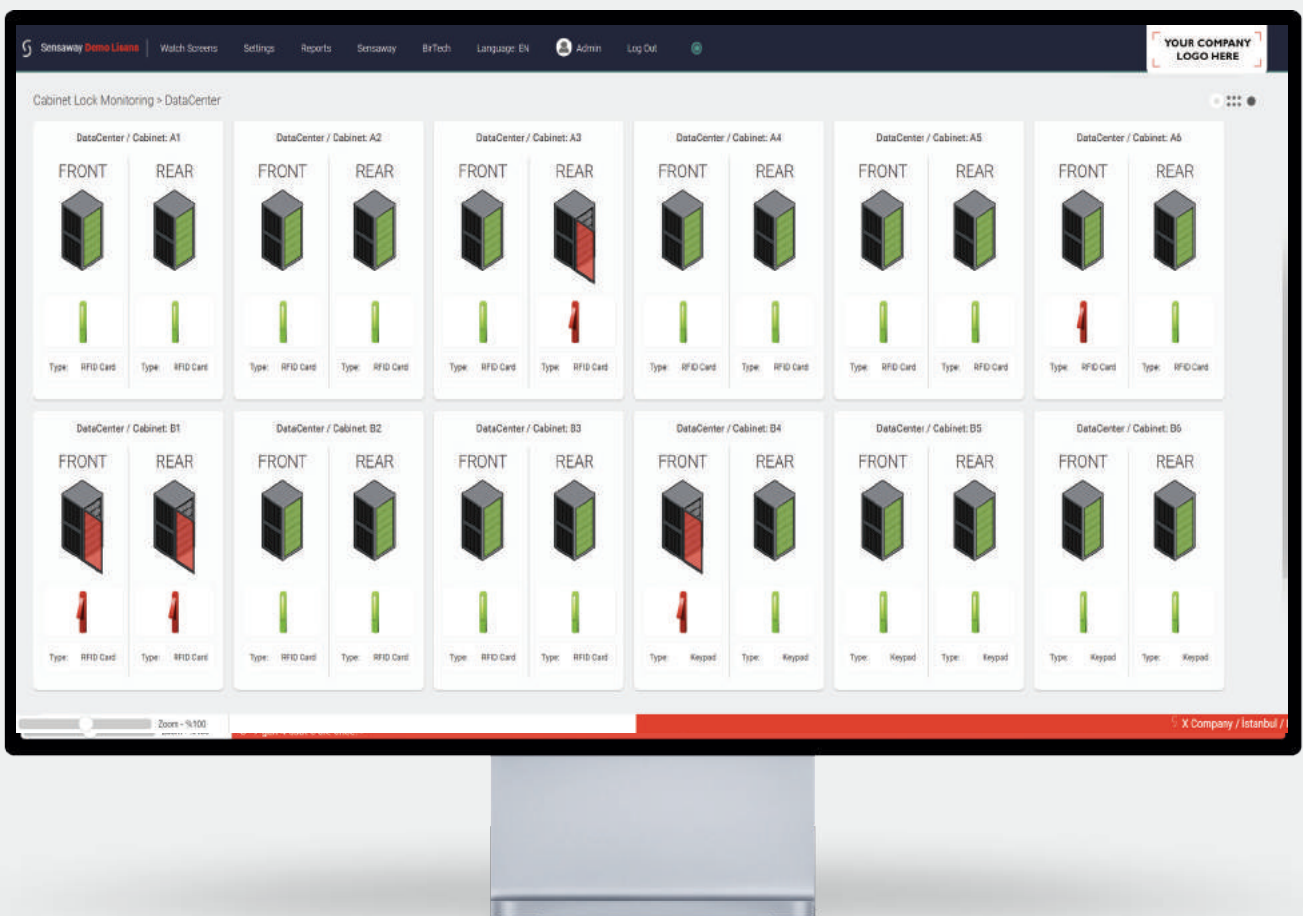
- You can monitor separately the data of the front and rear doors, electronic locks and mechanical locks of the cabinets in your data center, and the alarm conditions that occur.
- You can report when and by whom the cabinet doors are opened and for how long.
- With the Remote Unlocking System, you can keep your cabinets in remote locations under control.
- Thanks to the easy identifications screen, you can quickly match the cabinet lock.



Look: BirSens CL Series Cabinet Door & Locks Monitoring Systems (P: 12)

Cabinet Door and Lock Monitoring

Physical Security



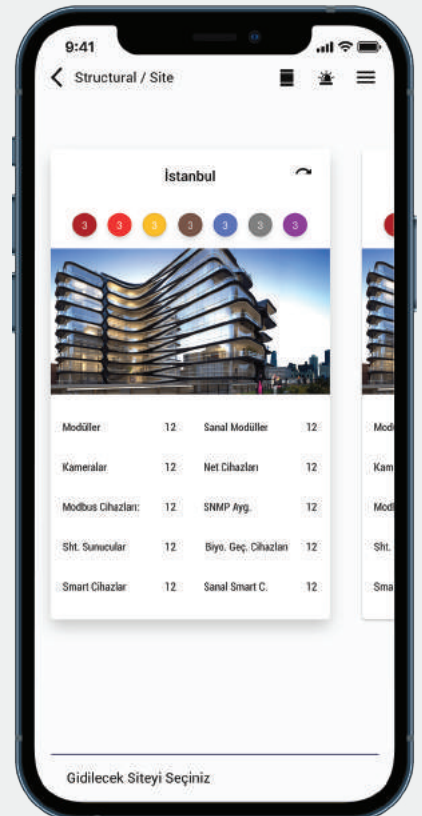
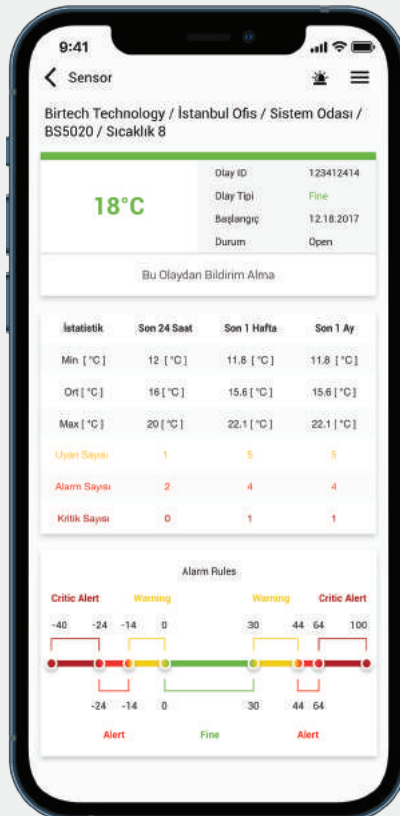
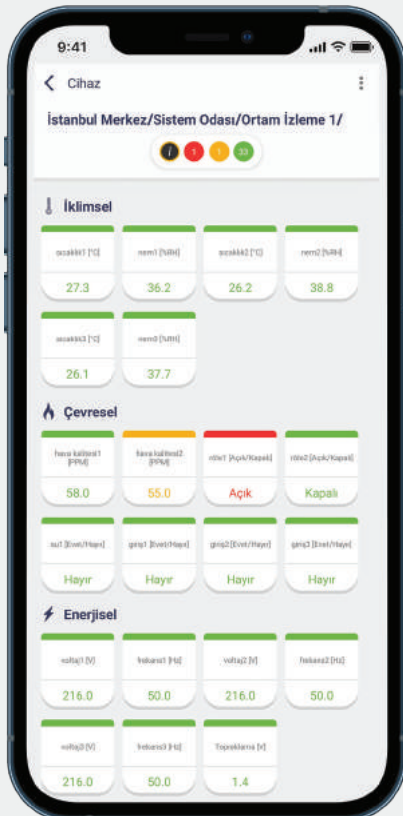
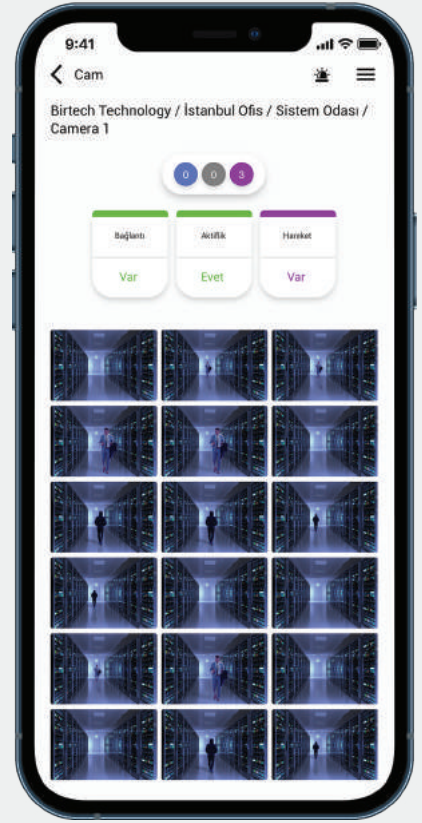
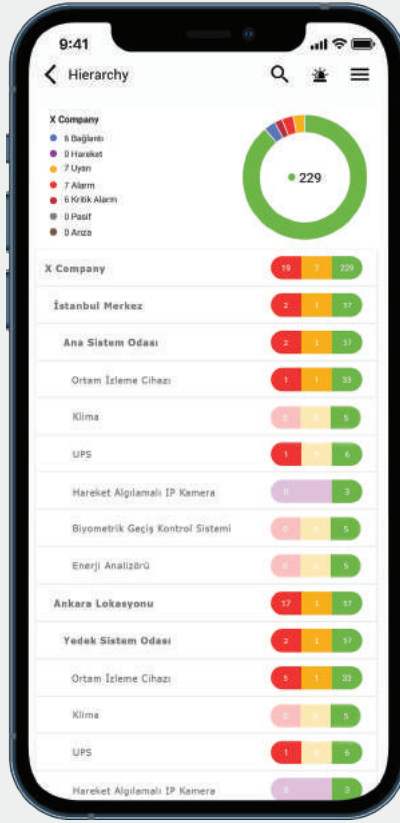
- Monitoring of the status of all cabinets on a single screen,
- Provide separated authorization to the users for cabinets even front and / or rear door. .
- You can report when and by whom the cabinet doors are opened and for how long
- Provide to send notification when abnormal conditions occur.
- On-demand, remotely opens locks by authority.
- Easily copy & moves the identifications and authorities from one to other door.

Sensaway Mobile

Environment Security in Your Pocket



- It can be easily downloaded from Android and IOS markets..
- Thanks to the hierarchical tree structure, you can see the alarm status of all your locations.
- By clicking on the devices, you can see all their sensors
- You can see the alarm threshold values of the sensors.
- You can analyze the historical minimum, average and maxi-mum values of the sensors.
- You can monitor all your locations and the devices in the locations through the application.
- You can receive mobile notifications in alarm situations.





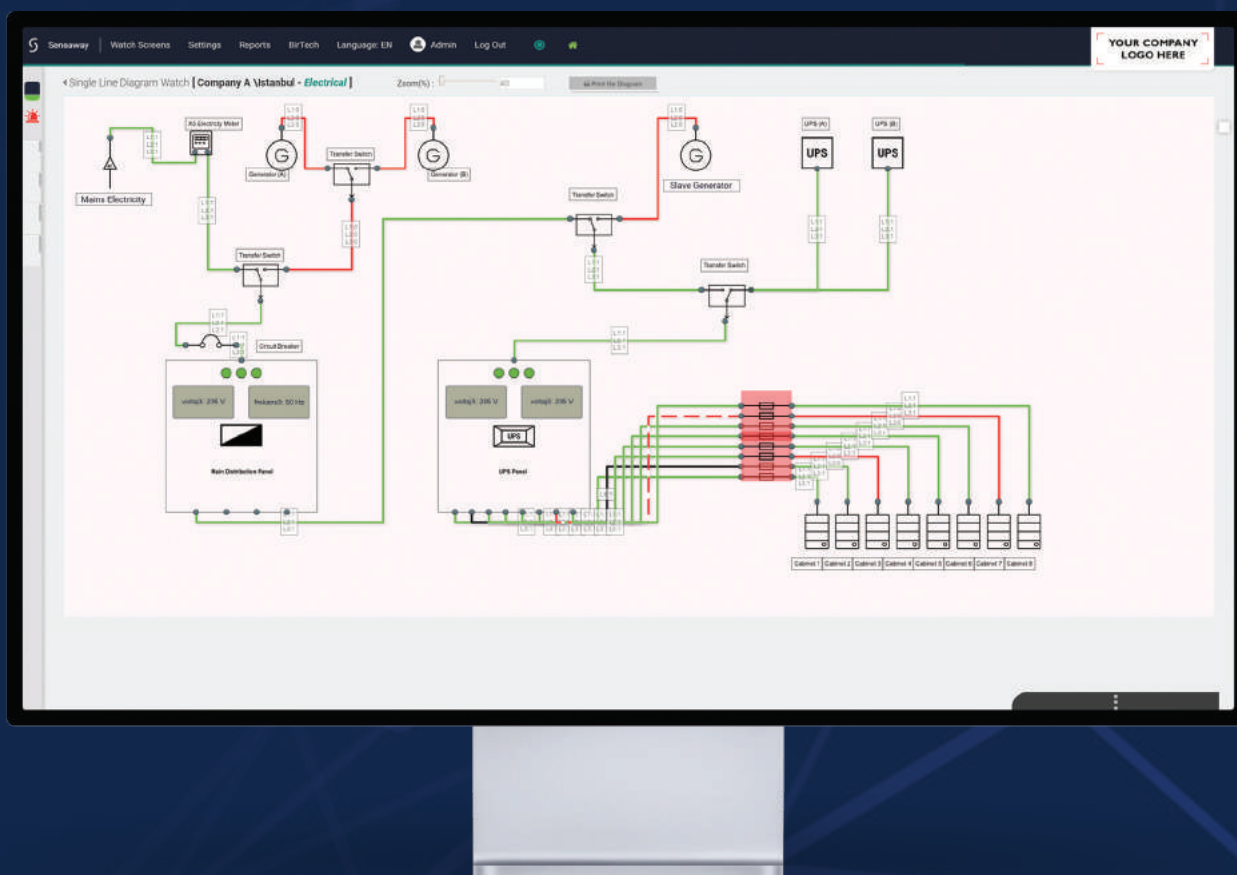
PowerSens®

Energy Monitoring System



Single Line Energy Monitoring

Graphic Tools



Today, the efficient use of energy and its uninterrupted supply are of great importance. For this reason, it should be ensured that the systems are constantly monitored and that the necessary actions are taken by ensuring that the fault situations are detected quickly.

Thanks to the PowerSens Energy Solution, you can centrally monitor and manage your energy single line diagrams in all your locations via a web browser.

Essential Scope of Application: Single Line Energy Monitoring System:

- **Data Centres**
- **Hospitals**
- **Schools**
- **Tower Buildings**
- **Hotels**
- **Factories**



BirSens[®]

Environment Monitoring Devices



Why BirSens?

Deep Experience for 20+ years and extensive knowledge in industry.

Dynamic adaption of developing technology by continuous R&D. 1.000+ Corporate Customer Experiments in domestic market.

Being a solution partner in Prestigious International Projects.

Best affordable solutions to match your requirements to monitor from single location to multi one.

Easy installation and user interface products. Technical Service to all around of Domestic market.

Remote connection and prompt reaction for overseas market.

7/24 Support with experienced team members.

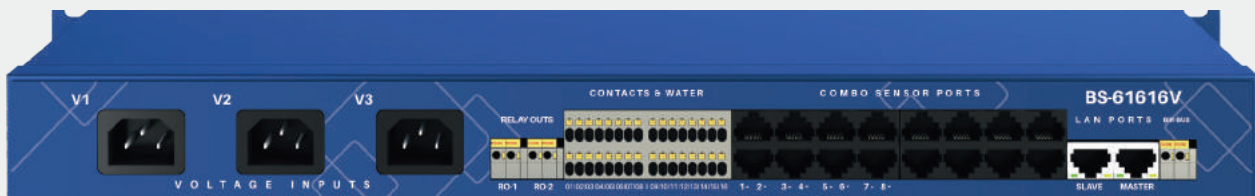
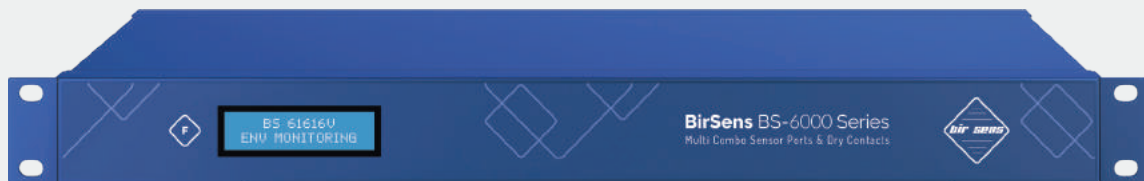
96% Customer Satisfaction, Verified by IPSOS Independent Survey Company Reports.



BS 6000 Series

Depending on the size of environment, it offers a rack mounting structure that can be expanded by the number and type of sensors to be positioned. Optimum solutions are obtained in the data centers where more than one sensor data needs to be monitored in particular.

Flexibility that can grow with you



Model	BS 6408B	BS 6408V	BS 6816B	BS 6816V	BS 61616V
Digital Sensor Port	4	4	8	8	16
Dry Contact / Water Leakage Sensor Port	8	8	16	16	16
16A Relay Out	2	2	2	2	2
Redundancy Power Supply (V1/V2)	-	+	-	+	+
3 Phase Power Voltage (Volt)	-	+	-	+	+
3 Phase Power Frequency (Hz)	-	+	-	+	+
Grounding / Neutral (V)	-	+	-	+	+

Digital Sensor Input

: For Temperature, Temperature / Humidity, Air Quality Sensors .

Dry Contact Sensor Inputs:

: For Door Open / Close, Water Leakage Flood, Smoke, PIR, Earthquake, Vibration detectors and any devices with dry contact connection.



BS 4500



Provides solutions for small environments with Desktop, Rack and Wall mounting cabinets and electrical panels. Practical and economic solution with POE connection.

Big Need of Small Environment



Wall Mountin Kit	Rack Mounting Kit
	
Model	BS 4500
Digital Sensor Port	3
Dry Contact / Water Leakage Sensor Port	6
Relay Out	1

Digital Sensor Inputs

: For Temperature, Temperature / Humidity, Air Quality Sensors.

Dry Contact Sensor Inputs:

: For Door Open / Close, Water Leakage Flood, Smoke, PIR, Earthquake, Vibration detectors and any devices with dry contact connection.

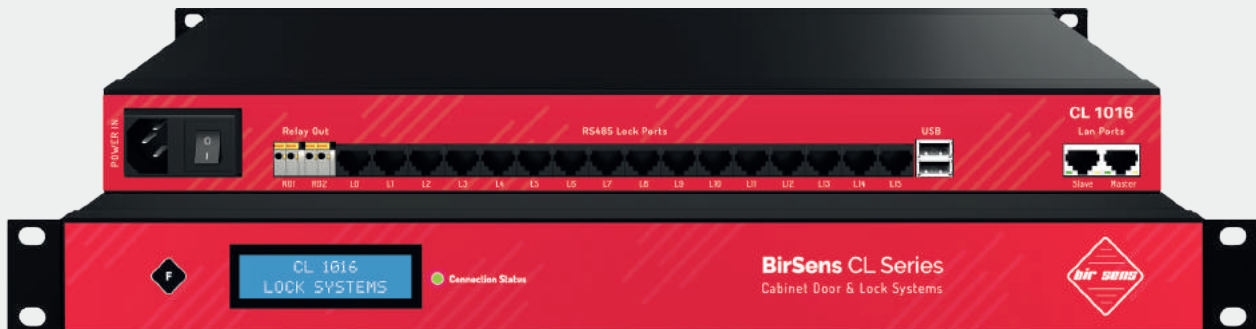


CL Series



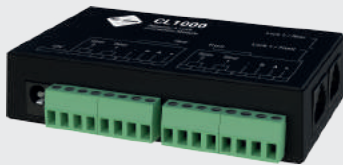
Provides remote monitoring / managing cabinet's door with rack mounting modules.

Cabinet Doors and Lock Systems



CL 1000 Cabinet Locking Interface unit

Compatible Locking Solutions



Model	CL 1004	CL 1008	CL 1016
Lock Port	4	8	16
External Door Sensor	8	16	32
Relay Out	2	2	2

Management Software Features

- Monitoring cabinets in a single screen.
- Authorisation users based on cabinets even front and / or rear doors.
- Report when and by whom the cabinet doors are opened and for how long .
- Sending notification when abnormal conditions occur
- On-demand, remotely open locks by authority.
- Easily copying & moves identifications and authorities between locks.



BS F18



It keeps log file of accessing users and upon request, instantly sent notification to authorities via SMS, e-mail. You can monitor door position open / close. Sensaway provides you the accessing report within time interval.

Biometric Acces Module



- Easy installation & user interface
- Thin and ergonomic design
- Strong processor and fast reaction
- Solid and durable
- High customer satisfaction
- Web based interface
- Lower malfunction rate

SC 700

F 18

uFace 800

SF 300





SMS & Calling Modules



In case the sensor parameters in the environment go beyond the threshold values you set, it informs the authorized persons via SMS and cali. Provides management and cost advantage in multilocation structures with a single device, single sim card, as it communicates directly with Sensaway software.

Be informed in Any Situation



Standart SMS and
Calling Module



Smart SMS and
Calling Module

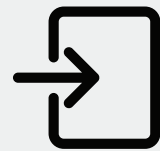
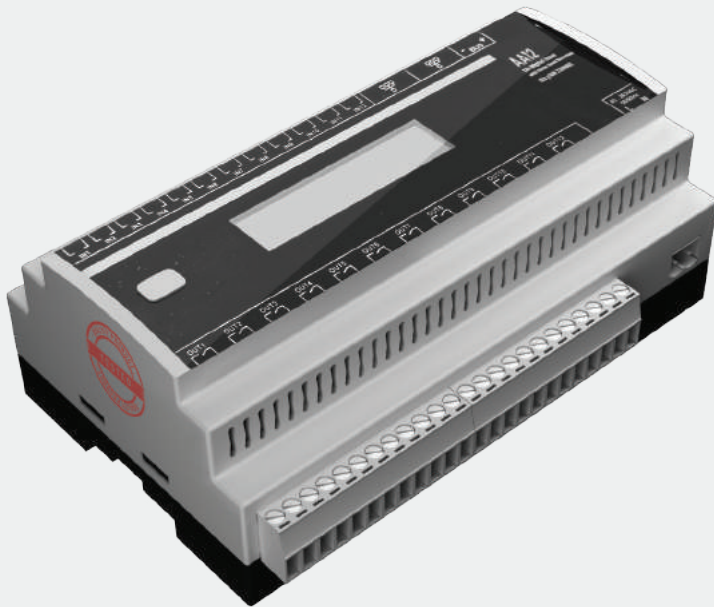
Model	Standard SMS and Calling Module BS - 865T	Smart SMS and Calling Module BS - 978T
Connection Type	USB	Ethernet / IP Based
Internal Battery	-	Yes
Notification in Power Outages	-	Yes
Sensaway Software Operation Control	-	Yes
Instant Status Tracking with Led Indicators	2 Pcs	5 Pcs



BS AA12

With dry contact inputs and relay outputs, it enables air conditioning devices such as cooling, heating and ventilation to be managed by defining various scenarios and to monitor their instantaneous status.

12 Ports Dry Contacts Input and Relay Module



Model	BS AA12
Dry Contact & Water Leakage Ports	12
16 A Relay Out	12

Dry Contact Sensor Input : For connection of any device having Door Open / Closed, Flood, Smoke, PIR, Earthquake, Vibration detector and contact connection..



Accessories



Audible & Visual Warning Module (siren)

If any ambient parameter, belonging to the environment, takes a value out of the defined normal value range, it informs the authorities through audibly/visually via siren and light. It can be positioned at the desired distance.

Thanks to this feature, it can be extended out of the room or in rooms where security personnel are available, using a cat6 cable. Thanks to the battery located on it, it continues to work in case of power failure..

IP Based Visual Led Module Solution (LM 1000)

You can instantly monitor the values of the environmental monitoring modules or the sensor directly connected to this product.

It has 10 characters capacity at each of total 4 lines on screen which are managed via web bases interface. You can customise display by 7 different coloring options too.

The communication with Environmental Monitoring Module on same network creates entire system works properly.



Web SMS Integration

Sensaway® management software can be integrated with the existed web SMS application of your organization through web. This service can be obtained with ready Sensaway® web SMS packages upon request. .



IP Camera

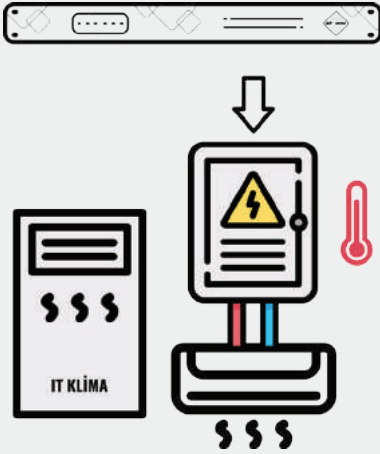
It ensures to take photos of any movements through reserved area, keep in records and notify by email to authority.

If it is desired, video recording and archive options are available continuously or on the move.



AC Control Unites ^{CE}

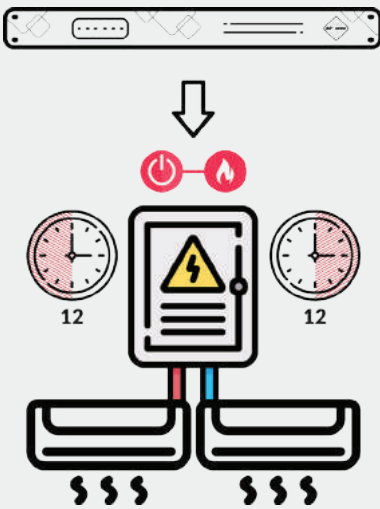
You can extend its operation life of non-managed Split and Standing type air conditioners.



KK 101 Back-up AC Control Unit

When BIRSENS® Environmental Monitoring Systems and Backup Air Conditioner Board are used together; if your IT or Industrial air conditioner regularly you use, malfunctions or if the system room cannot be cooled at defined intervals. it provides commissioning and operating of the back-up air conditioner and when the System Room temperature comes in to the defined range.

it provides switching off the backup air conditioner. Now you can extend the life of your air conditioner and save energy by operating your backup air conditioner automatically when necessary!



KK 102 Co-Aging Unit

When BIRSENS® Environment Monitoring Systems and a Time Adjusted Backup Air Conditioner Panel are used together, it provides operating of 2 separate air conditioners in 12 hours intervals per day, and if an air conditioner that should be operated during the operating time interval breakdowns or the system room cannot be cooled at specified temperature range,

It provides operating of both air conditioners by commissioning the backup air conditioner and when the system room temperature comes in between the pre-defined temperature range, it provides deactivating of the backup air conditioner again.

Furthermore, in case of fire, both air conditioners are closed completely and oxygen circulation in the room is stopped. By this means, the fire can be extinguished for a shorter period of time. It is now in your hands to extend lives of your air conditioners by resting them and to save energy by operating the ba-ckup air conditioner only when required.



Sensors

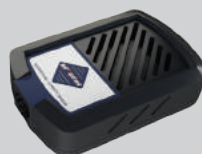


Climatic Parameters



TEMPERATURE SENSOR

It measures the ambient temperature in working range of -40 °C to +80 °C , by 0,5 °C precision and 0.1 resolution.



TEMPERATURE-HUMIDITY SENSOR

It measures; the environment temperature between -40 °C and +80 °C with 0,5 °C precision and 0.1 resolution; and measures the environment humidity between %0 and %100 RH with 1.8 % accuracy and 1 resolution.



INDUSTRIAL TEMPERATURE SENSOR

Thanks to Thermo-couple sensor, to enable us measuring the range of -270°C ile +1260 °C in industrial areas.



AIR FLOWING SENSOR

It is the sensor that detects whether there is air flow in system such as comes from air conditioning, ventilation systems.

Energetic Parameters



VOLTAGE / FREQUENCY MEASUREMENT

Between 0 and 285 VAC interval,
1% precision (Network/UPS)
Between 0 and 100 Hz interval,
1 Hz. precision (Network/UPS)



GROUNDING VOLTAGE MEASUREMENT

It provides a reference value in terms of grounding quality, by measuring Earth - Neutral Voltage between 0 and 30 VAC with 2% accuracy in the range.



ENERGY ON / OFF SENSOR

You can monitor the instantaneous status of your energy On / Off status.



ENERGY ON / NO & ON / OFF CONTROLLER

You can monitor the instantaneous status of your energy On / Off status as well as remotely turn On / Off any device connected to the control unit.



Sensors



Environmental Parameters



AIR QUALITY

[CO, H₂, CH₄, Etanol, Izo-butan, 1-10 ppm]

It enables to evaluate the change of ambient air quality with the effect of smoke or pollutant gases with a sensitivity of 0-100. The recommended ideal range is rated as 70-100.



SMOKE DETECTORS

It detects and informs the smoke caused by fire or cigarette in the environment.



POINT TYPE WATER LEAKAGE SENSOR

It is used for the detection of point water leaks that may occur on the floor of the environment.

Contact Type: NO (Normally Open)



CABLE TYPE WATER LEAKAGE SENSOR

It is used for local detection of water leaks that may occur on the ground.

Options for 1, 2, 5 meters are available.

Contact type : NO (Normally Open)



INDUSTRIAL DOOR SENSOR

It has a sensing distance of 7,62cm, although it is recommended for room doors. Controls whether the environment / media or cabinet doors are open / closed.



CABINET DOOR SENSOR

It is recommended for Rack Cabinet doors, it has mounting apparatus and 1 meter cable.



EARTQUAKE SENSOR

it detects earthquake motion in tremors at the acceleration value specified in TSE standards. Outputs can be taken for indoor gas and electricity cut-off or audiovisual siren during an earthquake



DRY CONTACT (YES / NO)

it provides the integration of alarm status of devices such as UPS, air conditioner, generator, fire extinguishing systems, which provide dry contact output to the system.



SensCare®

Advanced Support Package



Advanced Support Package and Aftersales Services for BirSens® and all sub-brands.

After Sales Services

Support Package Content



Periodic Maintenance

System maintenance is carried out by remote connection four times in a year quarterly. Sensaway software is updated during maintenance period.



7 / 24 Support

SensCare Customer representatives are just a phone call away.



Replace with a new one when it fails

In case of any hardware failure that cannot be repaired, it is renewed with a new one.



Software Installation Service

If Sensaway Central Management Software is requested to be reinstalled, it is planned and re-installed.



Unlimited Education

System trainings are provided to new users upon request.



Mobile Application

You can continue to monitor your environmental conditions through the mobile application free of charge

Environmental Monitoring Systems have very critical tasks when looking at the areas where they are used. It is equally important that the systems continue to operate in a healthy and safe manner.

SensCare® is a service package that provides 24/7 support, eliminates potential risks and prevents surprise costs.

96% Customer Satisfaction

based on IPSOS Independent Survey Company Reports



96% BirSens General Satisfaction Rate



94% SensCare Satisfaction rate



90% Sensaway Satisfaction rate



The Survey Result is concluded from Total 278 valid customer feedback. All feedbacks are kept in record by IPSOS data base. 96% satisfaction ratio reflects General Customer Satisfaction Level from “BirSens” .

They know Birsens

Customer Reviews



There are many features we like to use Birsens® Environment Monitoring devices and system. I can summarise in main headers which I like and satisfied a lot;

Easy installation and assembling at field location, very easy connection to portable sensors and commissioning. True measurement of environment values without deviation, very professional alarming management, integration and user-friendly. Capability of integration with multi variable system assets and software, Sensaway® also very strong for Information Security. It has user-friendly web based interface. Birsens also provides aftersales support involving to customize and improve user-interface according to customer requirements.

Emrah BAYARÇELİK
Deputy General Manager (IST System)



As MEDİKALPARK Hospitals, we are happy to be safe by entrusting the responsibility of our technical fields to 'Sensaway' as one of the largest health groups in Türkiye.

it is our luck to be working with a promising company by ensuring that the products produced with Turkish patents meet almost all our needs and ensuring continuity in more technological services. "Sensaway®" is a system that is understandable in terms of design, design structure, saves time with analysis setups, protects systems, and with online tracking systems, it is an ESSENTIAL system. Apart from recommending, every company should definitely use this system one day.

Mustafa KAYHAN
Asst. Director Technical Service



Birtech management stands behind all the work it does and cares about customer satisfaction.

Birtech employees offer inspiring digital innovations to their customers, constantly presenting innovations to their customers with a rich and inspiring content from future trends and technologies to our daily life. it continues with its operational excellence system and continuous improvement projects that will bring culture and adds value to its customers. .

. As the CCI Family, we established a very good business partnership with Birtech and created an efficient synergy.

Zihni YILDIRIM
Responsible Warehouse Operation & Logistic Planning



We prefer to corporate BirSens for Cabinet Security / Locking systems, and environment monitoring subjects at 100+ locations and system rooms throughout Istanbul.

Sensaway® provides centralised monitoring and management of all locations from single point makes our process is very easy.

Hakan YILMAZ
IT and Automation Chief



TANAP IT; Consequences of wide product range, and features of them, Sensaway® products becomes our primary solution which were considered and placed in supply chain as auxiliary and alternative for current system The fact that a Turkish company has done a great job by consolidating its products and employees in the same direction is an indication that we, as a corporate, have made the right choice.

Volkan ALYANSOÇLU
IT Systems Infra-structure Team Leader



Birsens®, wide product range, experienced technical team and looking possible alternative solution for entire projects is a strong partner for us. We are much appreciated to provide fast & hassle-free, fulfilled needs of different locations in our Harbour Reach.

Bahadır YILMAZ
IT Field Service Manager

Municipalities



Information & Technology



Education



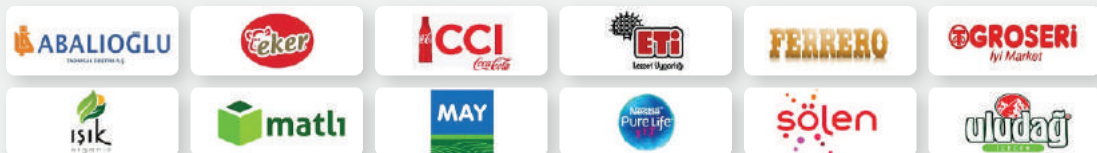
Energy & Infra-structure



Banking & Finance



Food, Agricultural & Farming



Holding



Automotive



Health



Industry & Production



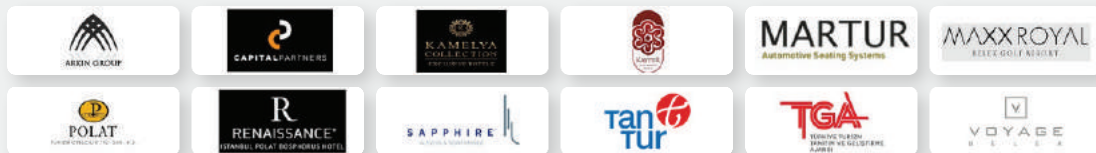
Defence Industry



Tekstile & Durable Consumers



Turism and Hospitality



Transportation



BirSens®

They know Birsens®

Some mega project references



IPSOS Independent Survey Company DTD 22.06.2021 Report

96% Customer Satisfaction

The Survey Result is concluded from Total 278 valid customer feedback. All feedbacks are kept in record by IPSOS data base. 96% satisfaction ratio reflects General Customer Satisfaction Level from "BirSens®".

